

Software User Manual

www.beward.eu

BEWARD IPS

- User friendly interface
- Quick search and setting of N series IP cameras



Table of Contents

CHAPTER 1. QUICK START	3
1.1. SYSTEM REQUIREMENTS	3
1.2. INSTALLATION	3
1.3. QUICK START	7
CHAPTER 2. MAIN CONSOLE	11
2.1. START MENU	12
2.2. INFORMATION WINDOW	13
2.3. PTZ CONFIG	13
2.4. ON SCREEN MENU	14
CHAPTER 3. PLAYBACK	16
3.1. INFORMATION WINDOW	16
3.2. AUDIO VOLUME CONTROL	17
3.3. SCREEN DIVISION	17
3.4. BROWSE MODE	17
3.5. OPEN RECORD	17
3.6. ENHANCEMENT / POST PROCESSING TOOL	18
3.7. SAVE VIDEO	18
3.8. SAVE IMAGE	18
3.9. PRINT	19
3.10. BACKUP	19
3.11. LOG VIEWER	20
CHAPTER 4. SCHEDULE	22
4.1. DAY MODE	22
4.2. LOAD PRESET MODES	22
4.3. INSERT A NEW SCHEDULE MANUALLY	23
4.4. COPY SCHEDULE	23
4.5. WEEK MODE	24
4.6. ADJUST THE SCHEDULED SETTING	25
4.7. ENCODING OPTION	25
CHAPTER 5. CONFIGURATION	27
5.1. SETTING – GENERAL	27
5.1.1. Startup	28
5.1.2. Storage	28
5.1.3. Status Display	30
5.1.4. Miscellaneous	30
5.1.5. Audio Preview	30
5.1.6. Auto Reboot	31
5.2. SETTING – CAMERA	32
5.2.1. Add Camera	32
5.2.2. Setting	33
5.2.3. Miscellaneous	34
5.2.4. IP Camera / Video Server Setting Panel	34
5.3. SETTING - I/O DEVICE	35
5.4. SETTING - PTZ CONFIG	36
5.5. SETTING – MONITOR DISPLAY	37
5.6. SAVE/ LOAD CONFIGURATION	38
5.7. LOG VIEWER	39
5.7.1. Log Viewer – System Log	39
5.7.2. Export and Backup Log	40
5.8. EXPORT	40
5.9. BACKUP	41
5.9.1. Backup	41
5.9.2. Delete Recorded Information from the System	43
5.10. NETWORK SERVICE	45
5.10.1. Live Streaming Server	45
5.11. About Main Console	48
CHAPTER 6. REMOTE LIVE VIEWER	49
6.1. SETUP PANEL	49

6.1.1. General Setting	50
6.1.2. Server Setting	50
6.1.3. Group Setting	51
6.1.4. Camera Setting	52
6.1.5. Monitor Display Setting	52
6.1.6. Notification Setting	53
6.2. SHOW CAMERA(S) ON THE DISPLAY SCREEN	54
6.2.1. Log In/ Log Out:	54
6.2.2. Server and Camera List:	54
6.2.3. PTZ Camera Control:	54
6.2.4. Zoom Tele	54
6.2.5. Play/ Stop/Drop	54
6.2.6. Information Display Window	54
CHAPTER 7. WEB VIEW	55
7.1. SERVER IP	55
7.2. REMOTE LIVE VIEWER.....	55
7.3. REMOTE PLAYBACK.....	55
APPENDIX	56
A. SYSTEM LOADING	56
B. STORAGE REQUIREMENTS TABLE (VGA).....	57
C. STORAGE REQUIREMENT TABLE (MEGA)	63

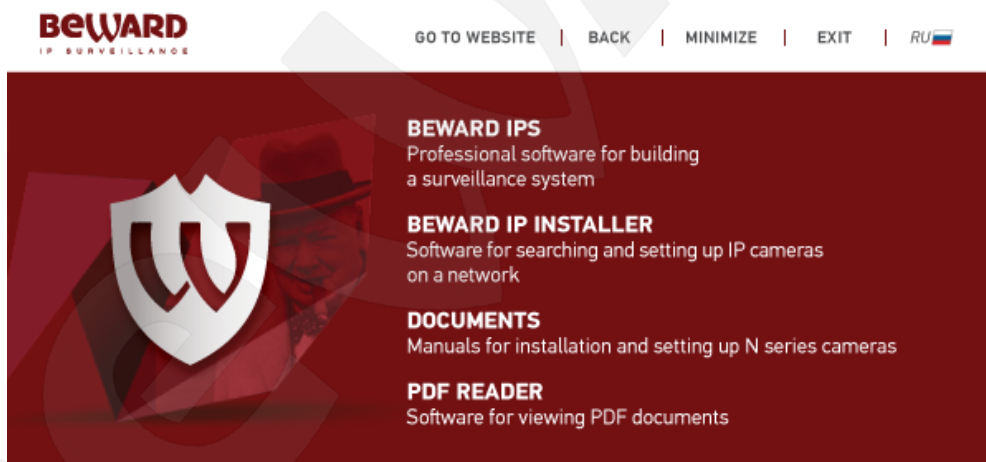
Chapter 1. Quick Start

1.1. System Requirements

Total FPS at VGA	150	360	570	1080	1380
CPU	Intel Core 2 Duo E5200	Intel Pentium G620	Intel Core i3-2100	Intel Core i5-2500k	Intel Core i7-3770k
RAM	2GB	2GB	2GB	4Gb	4Gb
Motherboard	Intel Chipset recommended				
Display	AMDHD5450, nVIDIA GT430, Intel HD Graphics 2000, or above				
Ethernet	100 BaseT or Above, Gigabit LAN Recommended				
Hard Disk	7200RPM, 250GB or above				
OS	MS Windows 2003 / XP(32-bit) / 2008(64-bit) / Vista / Windows 7				

1.2. Installation

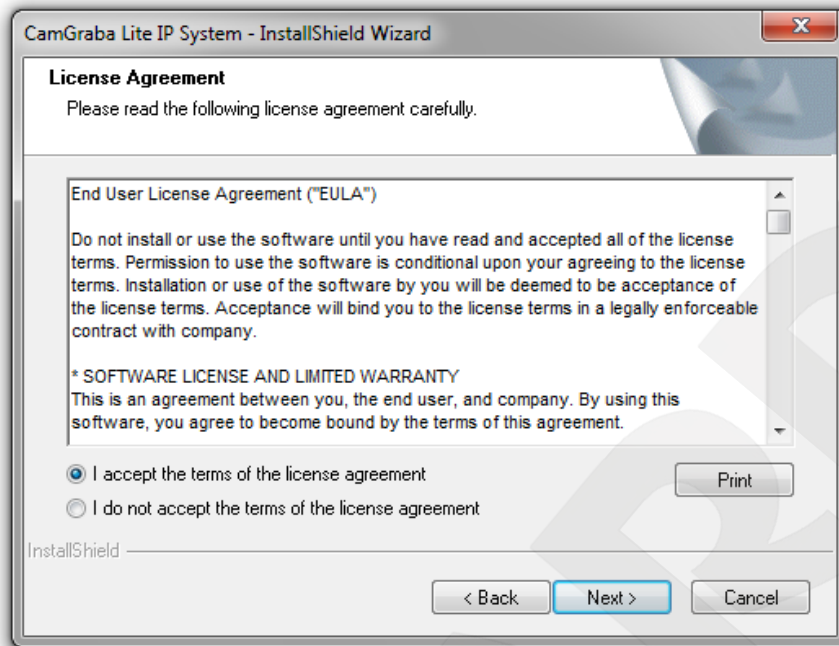
Step 1: Insert the Installation CD. (Pic 1.0)



Pic. 1.0

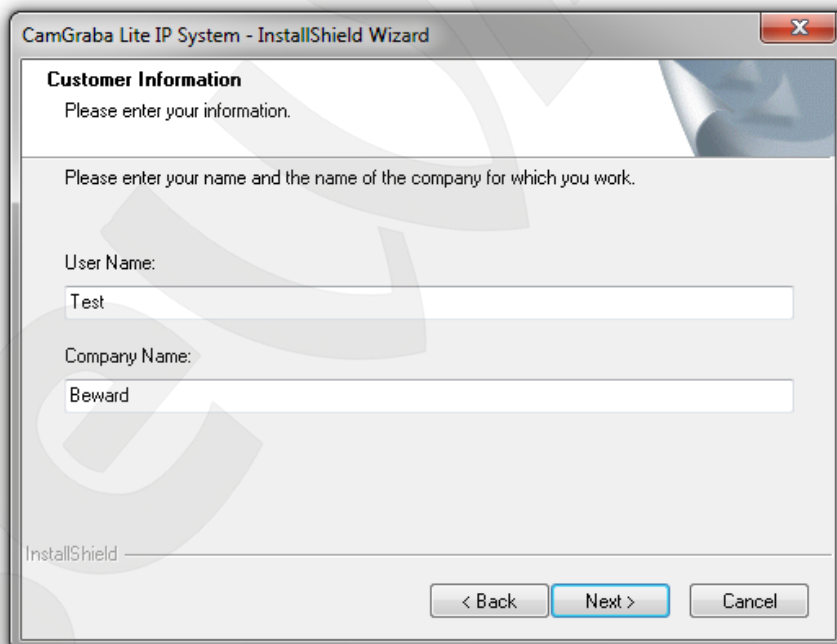
Step 2: Run [BEWARD IPS] to install.

Step 3: Check the option "I accept the terms of the license agreement" (Pic.1.1.).



Pic. 1.1

Step 4: Please enter your name and the company name for which you work (Pic. 1.2).



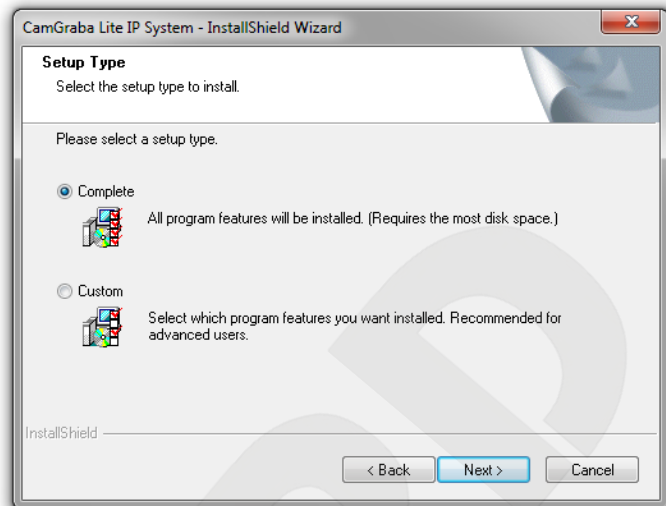
Pic. 1.2

Complete Setup Type:

Install all program features into the default directory.

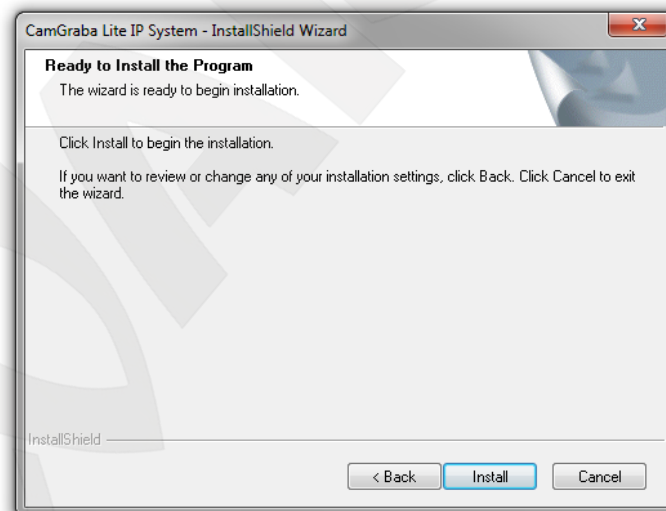
Check the option “**Complete**” (Pic. 1.3).

All program features will be installed. This requires the most disk space.



Pic. 1.3

Press the “**Install**” to start the installation (Pic. 1.4).



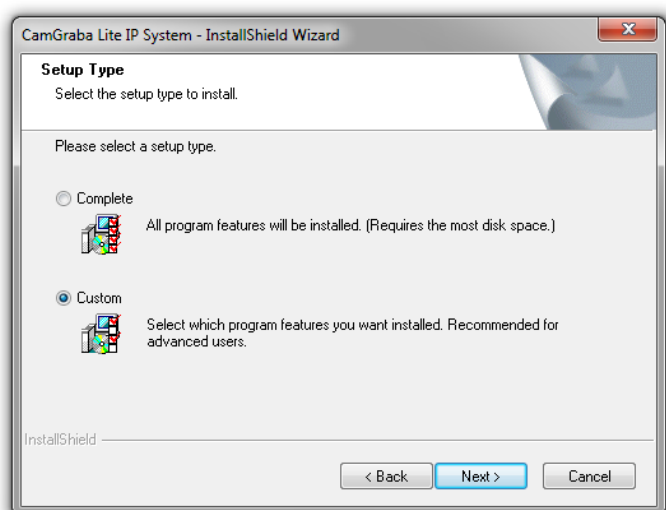
Pic. 1.4

Custom Setup Type:

Install the system to a preferred directory. Or select whichever feature(s) you wish to install.

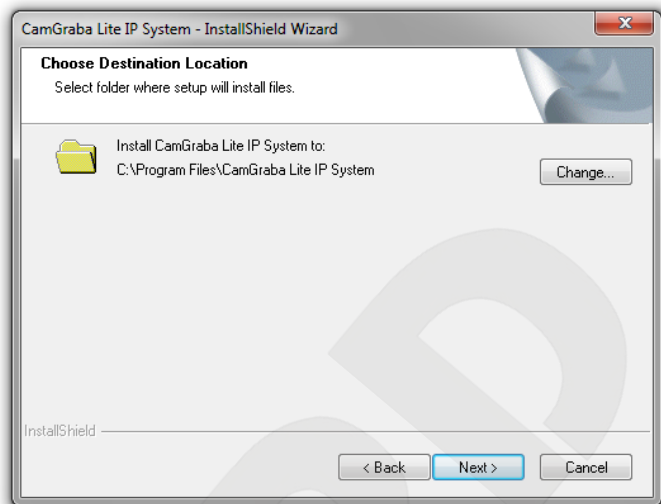
Check the option “**Custom**” (Pic. 1.5).

Select which program features you want to install. This is recommended for advanced users.



Pic. 1.5

Select folder where setup will install files
(Pic. 1.6).

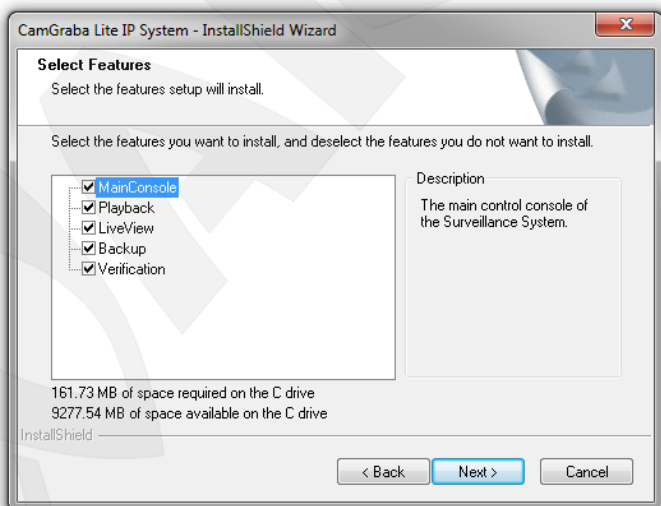


Pic. 1.6

Select the features setup will install
(Pic. 1.7).

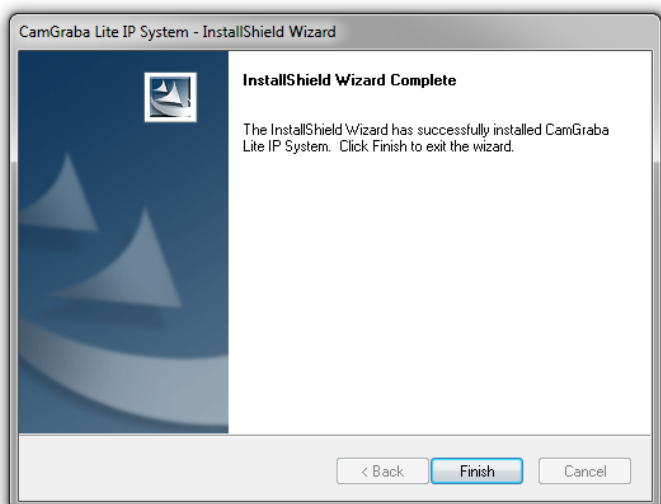
NOTE:

For example, select only Playback and LiveView for installation. Install and use only these features on multiple remote sites at home or anywhere with a PC.



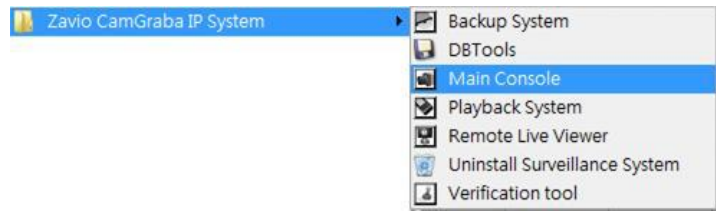
Pic. 1.7

Press "Finish" to finish the installation
(Pic. 1.8).



Pic. 1.8

Execute the Main Console (Pic. 1.9).



Pic. 1.9

Enter the password you like into the edit box. And then press "OK". Now enjoy our Intelligent Surveillance Solution (Pic. 1.10).



Pic. 1.10

1.3. Quick Start

Install IP camera(s)

Step 1: Setup the IP camera(s) following by the instruction manual provided by the manufacturer.

Step 2: Check the network between the IP camera(s) and the system.

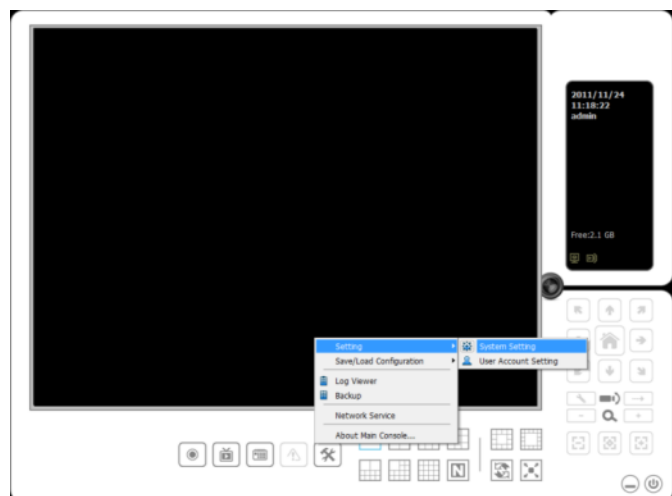
Step 3: Add the IP camera(s) to the system following below steps.

Add IP camera(s)

Step 1: Go to Start > All Programs > CamGraba IP System > Main Console.

Step 2: Type in user name and password and log on to the system.

Step 3: In Main Console, go to General Setting > Setting > System Setting to obtain the Setting panel (Pic. 1.11).



Pic. 1.11

Step 4: Go to Camera tab (Pic.1.12). If your IP cameras support UPnP. Follow step 5. Otherwise, follow step 8.

Step 5: Click “**Search**” to search for the IP cameras that are available at this point (Pic.1.12).

NOTE:

Search function just support the IP cameras with UPnP supported.

Step 6: Select one of the IP cameras that are available; check the option and enter the username and password (Pic.1.13).

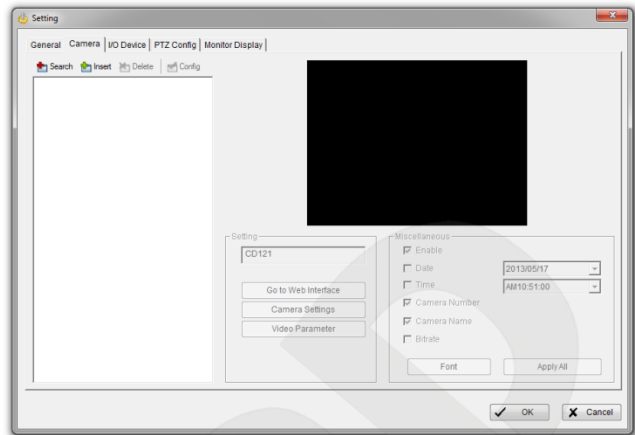
Step 7: Click OK to add the camera.

Step 8: Click “**Insert**” to insert the IP cameras (Pic.1.12).

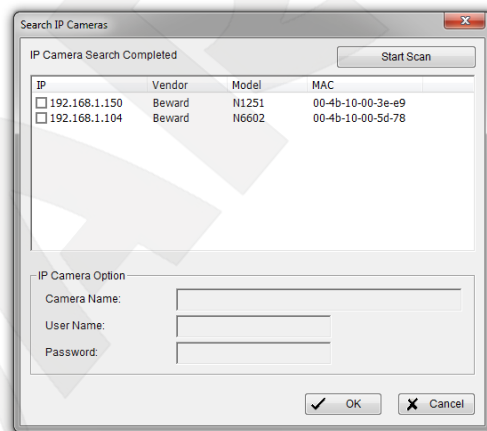
Step 9: Enter the IP address or domain name (check the “**Use DNS**” option), Http Port, Username, and Password (Pic.1.14).

Step 10: Click “**Auto Detect**”

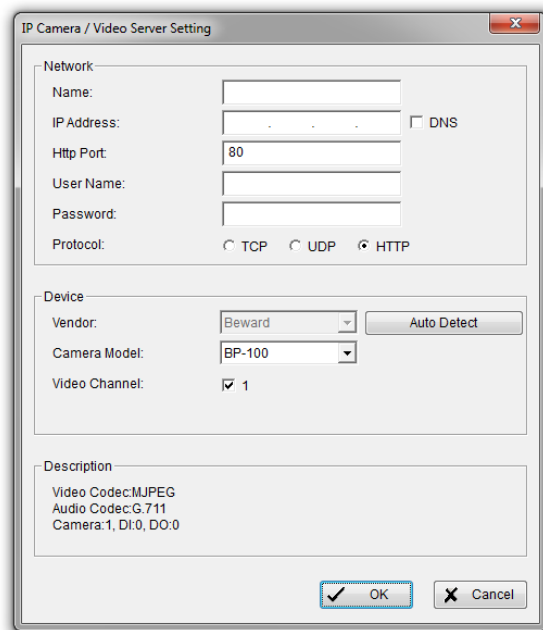
Step 11: Click **OK** to add the camera. Click **OK** to exit the Setting panel.



Pic. 1.12



Pic. 1.13




Pic. 1.14

Set Schedule

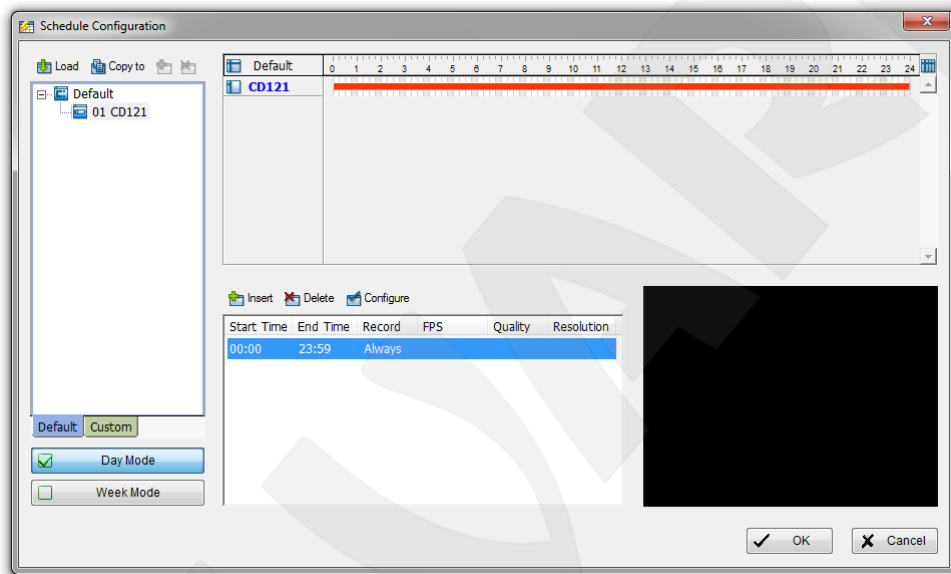
Step 1: Go to Start > All programs > CamGraba IP System > Main Console.

Step 2: Type in user name and password and log on to the system.

Step 3: In the Main Console, go to Schedule Configuration .

Step 4: By default, when inserting a camera to the system, the recording schedule is automatically set to be 24 hours a day, always record (*Pic. 1.15*).

Step 5: Click Configure on the selected camera schedule or double click on any schedule bar to modify the recording mode.



Pic. 1.15

Step 6: When satisfied with the schedule setting, click OK to update the recording schedule.

Step 7: Click OK again to go back to the Main Console.

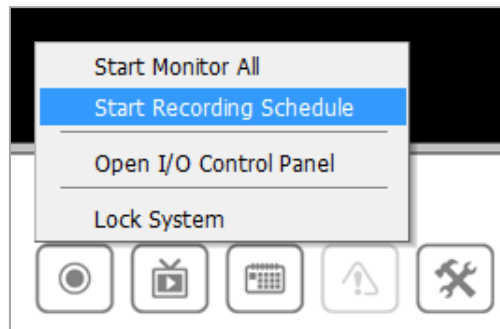
Start Recording

Step 1: Go to Start > All Programs > CamGraba IP System > Main Console

Step 2: Type in user name and password and log on to the system.

Step 3: In the Main Console, go to Start .

Step 4: Click on “**Start Recording Schedule**” to enable the functions (*Pic. 1.16*).




Pic. 1.16

Execute Playback System

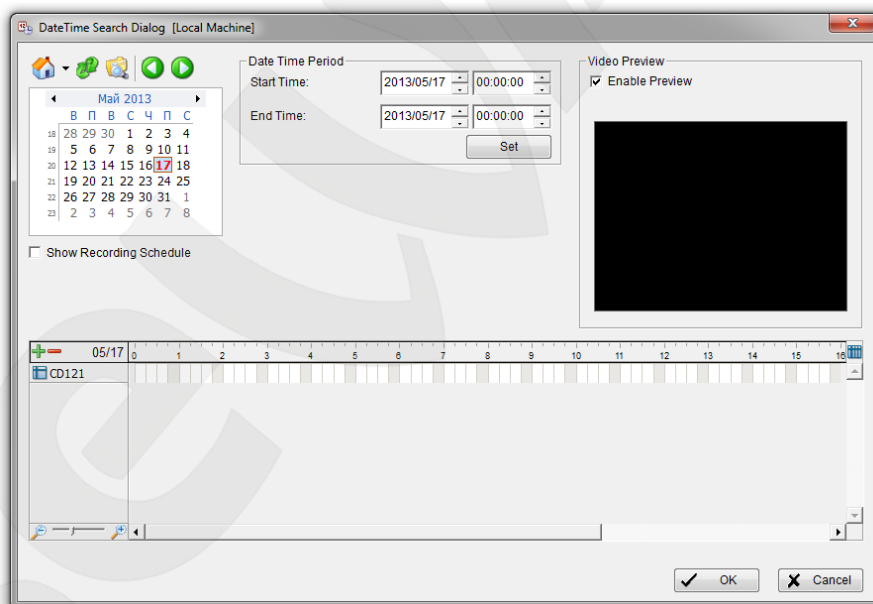
Step 1: Go to Start > All programs > CamGraba IP System > Main Console.

Step 2: Type in user name and password and log on to the system.

Step 3: In the Main Console, go to Execute Playback System  .

Step 4: In Playback, click on Date Time Search Dialog.

Step 5: Select a specific day from the calendar, left click on mouse and drag to select a video clip to replay; user can also select multiple channels to replay at the same time (Pic. 1.17).

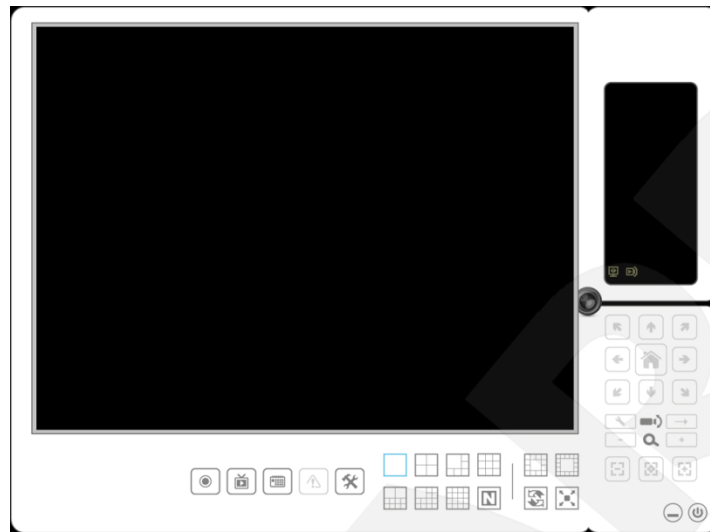


Pic. 1.17

Step 6: The recorded files are ready to view now.

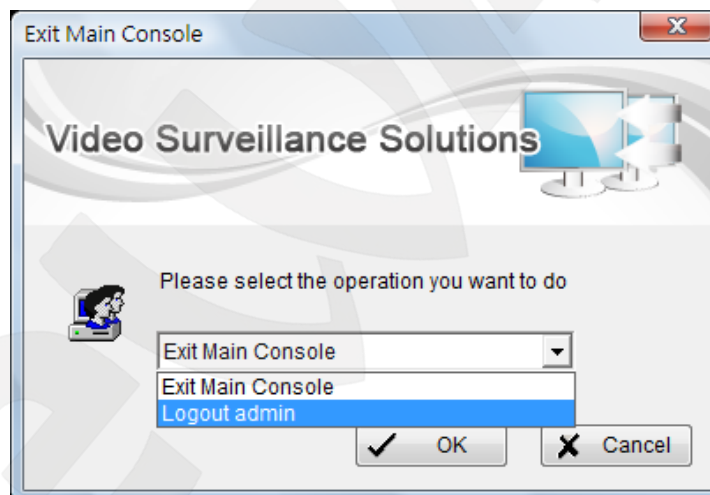
Chapter 2. Main Console

This is the main operation system - to activate, schedule recording, and configure system setting (*Pic.2.1*).



Pic. 2.1

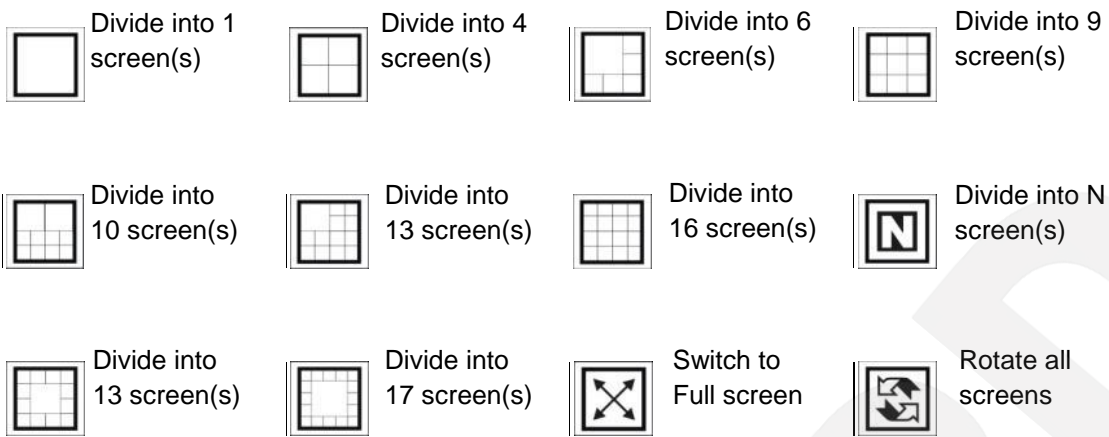
EXIT: Shut down the Surveillance System or log out current user (*Pic.2.2*).



Pic. 2.2

MINIMIZE: Minimize the Main Console window.

SCREEN DIVISION: Allocate the sub-screen display by clicking on the desired layout icon. To switch to single camera display, double click on a particular sub-screen. Double click on the screen again to regain previous screen division layout (*Pic.2.3*).

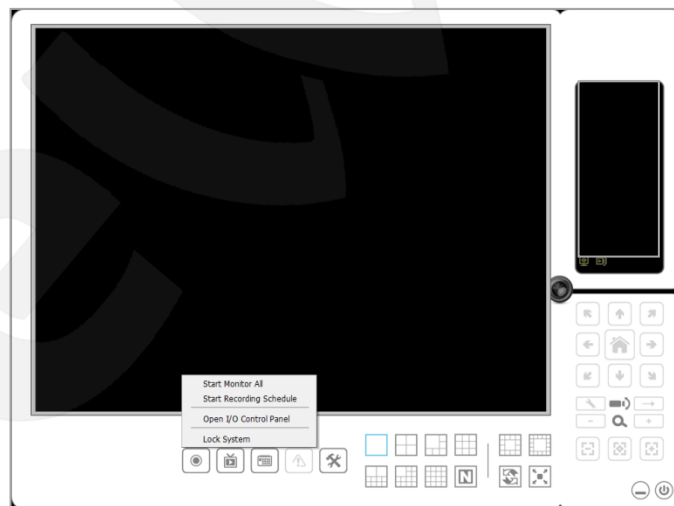


Only available under wide screen resolution (1440x900, 1680x1050, 1920x1080, 1920x1200):



Pic. 2.3

2.1. Start Menu



Pic. 2.4

START: Click on the Start Menu icon and select from the drop down menu to activate/deactivate: Recording Schedule System. Select Start/Stop Monitor All to activate/ deactivate all the functions at once (Pic.2.4).

NOTE:

When activating any of the monitor functions, system considers the current screen status as normal. Therefore, if you want to, for example, detect Missing Object, be sure the object needed to be protected is in its position at the moment you click Start button.

Playback: Click on the icon to get Playback Console. You can watch recorded video, search recorded video, adjust image of the stored data, save video/ pictures, print images, check log information and event records, and set up recording function configuration.

Schedule: Organize recording time schedule and setup recorder configuration.

General Setting: Select from the drop down menu to modify general setting, save/ load configuration settings, start counting application, access log viewer and backup files, or network services.

2.2. Information Window

Display date, time, free HD space, CPU temperature, fan speed, and customized text. To customize Information about window's setting, go to General Setting > Setting

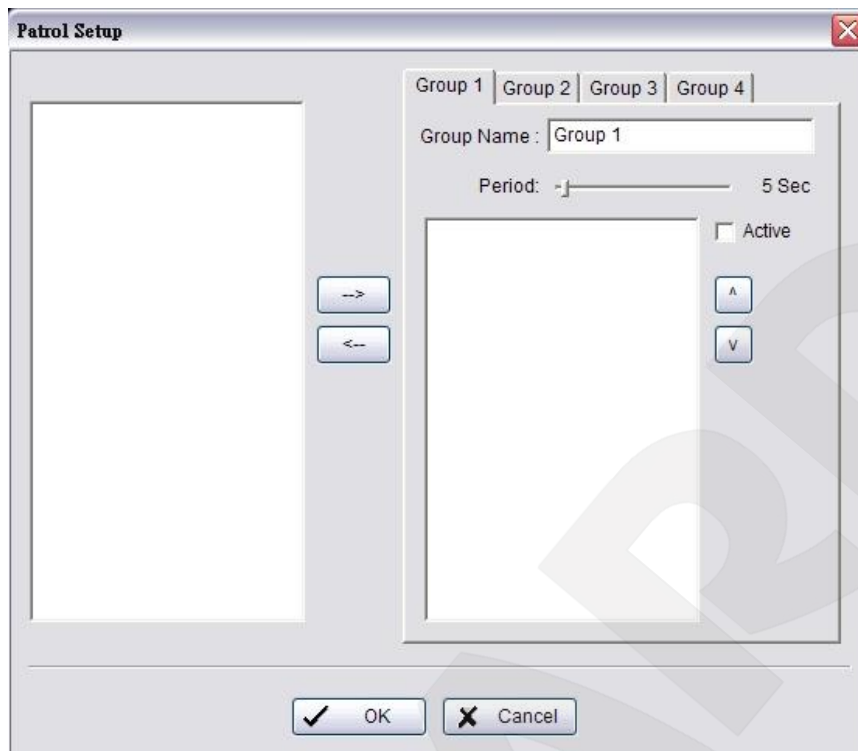
2.3. PTZ Config

Control the movement of PTZ cameras. With cameras that support PTZ control, you can move, zoom, patrol, adjust the focus, and set preset points of the cameras.

- **Preset/ Go:** Adjust the camera view until you are satisfied. Click on the "Add Present Point" icon and set up the view as the preset point 01. Adjust the camera view again and set up the preset point 02. Repeat the process until finish setting up all preset points. You can enter any names you like to instead of the preset point 01, preset point 02, preset point 03.

Click on the "Go to Present Point" icon and view the result of your setting.

- **Zoom:** Click on the + and – signs to zoom in and zoom out the view.
- **Focus:** You can select to have the camera focused near or far. To focus near means objects that are closer will be clearer than the objects that are further away. On contrast, to focus far means objects that are further will be clearer than the objects that are closer. Click on the Focus icon and select auto focus if you want the system to decide the focus point for you.
- **Patrol:** Go to Set Preset Point- Set Patrol to obtain the Patrol Setup dialog. From the left window, select the cameras that you would like to have in the patrol group. Align the cameras in order in the right window and adjust the time. Rename the group name if required. After completing the setup, check the Active option, and then click OK (Pic.2.5).

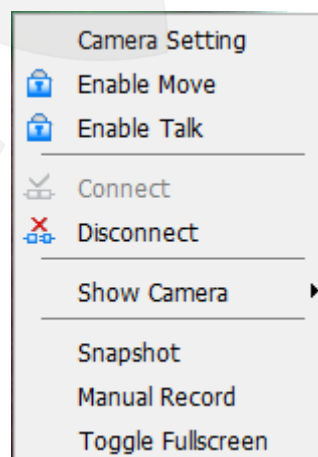


Pic. 2.5

You can define up to four groups of auto patrol. To start or stop, click on Go to Preset Point in the Main Console, and select Start Patrol or Stop Patrol.

2.4. On Screen Menu

Right click on the camera screen and get the On Screen Menu, from which you can enable move, enable digital PTZ, and connect/ disconnect the camera (Pic.2.6).



Pic. 2.6

Camera Setting: Click to go to the camera setting page for configuration.

Enable Move/Area Zoom: With cameras that support PT function, click the Enable Move function to adjust the current camera's view by clicking on the display screen. To cancel this function, right click on the screen and select Disable Move.

With cameras that support Area Zoom function, click the Enable Move/Area Zoom function to adjust the current camera's view by dragging a rectangle on the display screen. To cancel this function, right click on the screen and select Disable Move/Area Zoom.

Enable Talk: With cameras that support two-way audio, you may select enable talk to utilize the function.

Connect/ Disconnect: Right click on the display screen and select Connect/Disconnect to modify the connecting status of the camera.

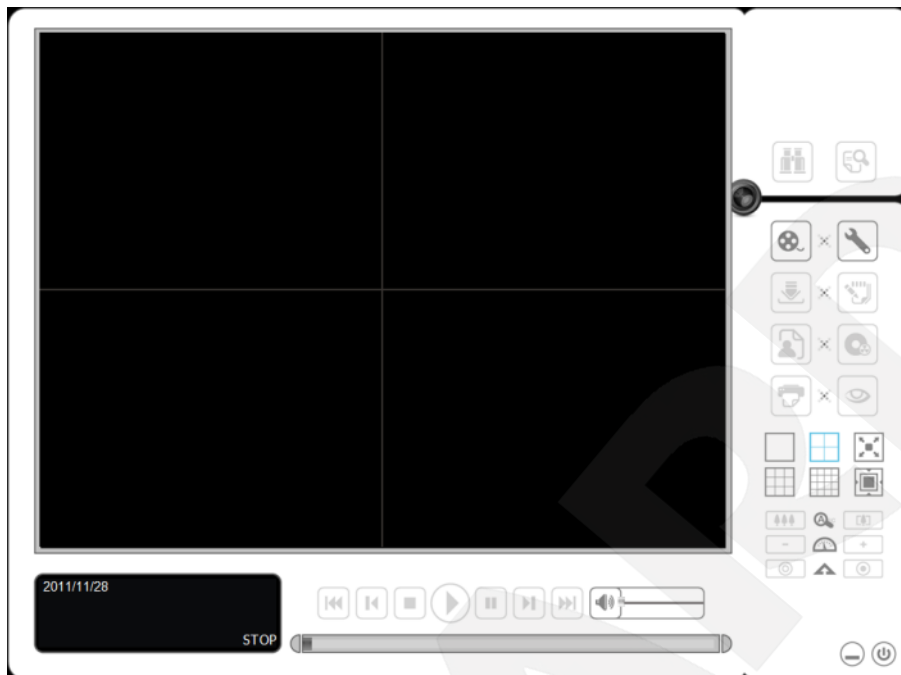
Show Camera: Select the camera from the Show Camera Menu to display video on selected screen.

Snapshot: Select the snapshot function to capture a specific video image immediately. You have the options to copy the image to the clipboard or to save it.

Manual Record: Start recording video by selecting manual record.

Toggle Full Screen: Select to view a specific channel with full screen. Press "ESC" to go back to original window.

Chapter 3. Playback



Pic. 3.1

Watch the recorded video, view and/or search for unusual events and recorded system information (Pic.3.1).

MINIMIZE: Minimize the Playback console.

EXIT: Shut down the Playback console.

SCROLL BAR: Indicate the status of the playing video; drag it to where you want to review.

CONTROL: Play, pause and stop the video.

Screen Division: Allocate the sub-screen display by clicking on the desired layout icon. To switch to single camera display, double click on a particular sub-screen. Double click on the screen again to go to previous screen division layout. To view in the full screen mode, right click on the screen for the Toggle Full Screen function.

ZOOM: Zoom in and zoom out. Get a close up view of the recorded video; move to the spot you want to view by dragging the screen.

SPEED: Control the speed of the playing video. Click + to speed up and – to speed down.

CUE: When playing video, click on the Cue In/ Cue Out icon at where you want to set as the starting/ ending point of a saved video clip. The Cue In and Cue Out time will be displayed on the Playback Information Window once they are set.

3.1. Information Window

Display video date and time, current video status, cue in/ out points' time, and speed.

3.2. Audio Volume Control

Adjust the sound level

3.3. Screen Division

Allocate the sub-screen display by clicking on the desired layout icon. To switch to single camera display, double click on a particular sub-screen. Double click on the screen again to regain previous screen division layout.

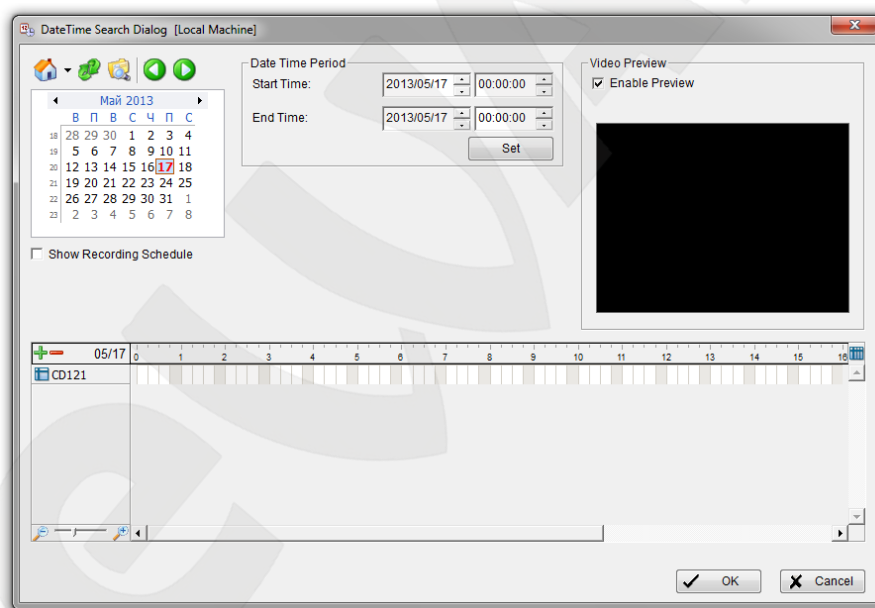
3.4. Browse Mode

Play the recorded video.

3.5. Open Record

Click on Date Time button to access the Date-Time Panel and withdraw the video record that you want to review (Pic.3.2).

Withdraw the records:



Pic. 3.2

Step 1: From the window at the top left of the Date-Time Panel, select the date you want to check, and you will see red/green lines show on the time table implying available recorded video.

Step 2: You can select the day. If the day has record files, that would show red icon.

Step 3: In Select Camera(s) section, select the camera(s)/channel(s) from which you want to see the video. You can select all cameras by clicking Select All button.

Step 4: Check Enable Preview to get the preview of the video you select.

Step 5: Click OK when you are done with the settings.

3.6. Enhancement / Post Processing Tool

General Setting: Check the option and chose whether you want to apply the setting to all the channels or only to those currently shown on the screen.

Visibility: Check the option and adjust the gamma value of the image to enhance the image and make it cleaner.

Sharpen: Check the option to activate the function. Move the slider control to the right to sharpen the image, to the left to soften it.

Brightness: Check the option to activate the function. Move the slider control to the right to make the image brighter.

Contrast: Check the option to activate the function. Move the slider control to the right to increase contrast.

Grey Scale: Check the option to show the record in grey scale mode so the image displays in black and white.

3.7. Save Video

Step 1: Click on the display screen to choose the camera display that you want to save as a video clip.

Step 2: Set up the cue in and cue out points; the cue in and cue out time will show on the information window.

Step 3: Click Save Video icon, choose the folder where you want to save the file at, enter the file name and click SAVE. You may export (i.e. save) the record with both audio and video or video only.

Step 4: Choose the compression format and then save the video.

3.8. Save Image

Step 1: Click on the display screen to choose the camera display from which you want to save pic-tures.

Step 2: Click Save Image button when the image you want is shown on the screen. You may click Pause to freeze the video, use Step Forward/ Step Backward function to find the picture(s) that you want to save.

Step 3: Choose the folder and the format of image (BMP or JPEG) you prefer and then click save.

NOTE:

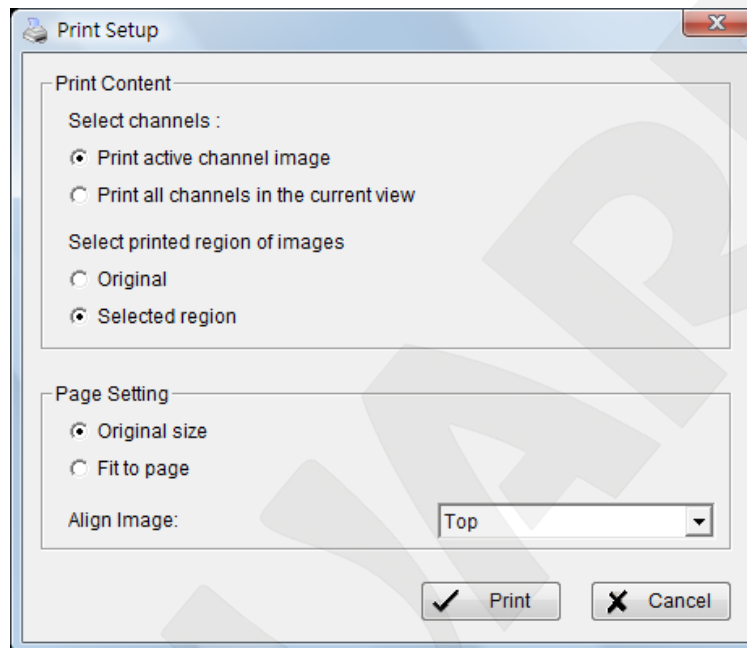
You may skip step 3 by pre-setting a folder and format that you want to save the images.

3.9. Print

Print the current image of the video you choose (Pic.3.3)..

Print Content: Print the image from the current selected channel or all the channels shown on the screen. Select to print original view or selected region on camera.

Page Setting: Set to print the image with original size or fit to page. Set Align image to Top, Center, or Bottom.



Pic. 3.3

3.10. Backup

Different from Save Video, the Backup function saves everything from the Playback panel, including log information (Pic.3.4).

You can start a full function Playback Console and load the backup files into it on any PC with Windows operating system. This means you may monitor the real time video and work on the backup files on separate computers simultaneously.

Step 1: Press the “Open Record” to select data and press “Backup”.

Step 2: You can adjust the Start Time and End Time you want to backup.

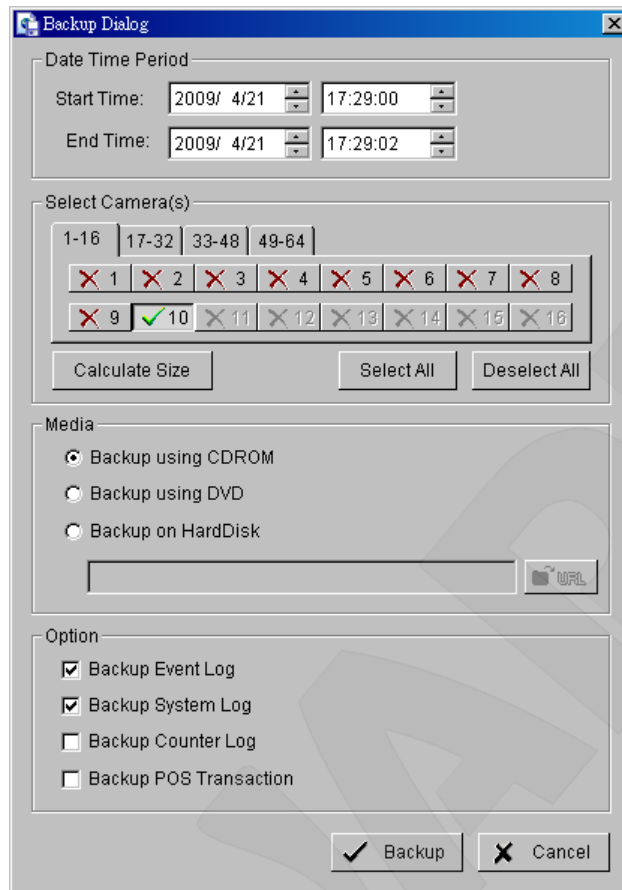
Step 3: You can adjust the Cameras you want to backup.

Step 4: You can calculate the size of the backup data.

Step 5: Select the directory you want to save the backup data.

Step 6: Check the log you want to backup.

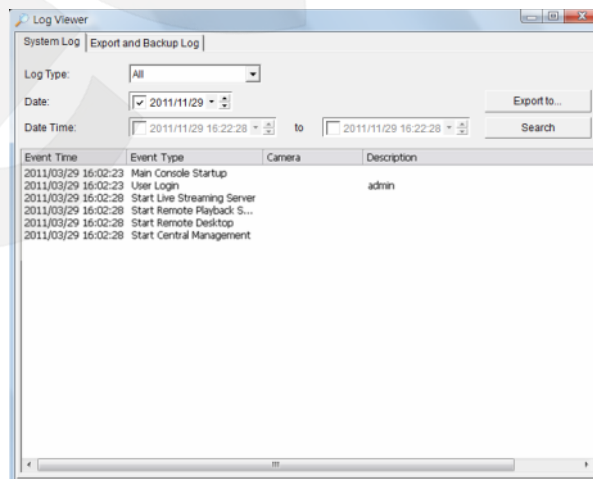
Step 7: Press the “Backup” to start backing up.



Pic. 3.4

3.11. Log Viewer

System Log: Select Log Type form the drop-down menu. There are total 21 types of log types, including (Pic.3.5):



Pic. 3.5

Main Console Startup

Main Console Shutdown

User Login

Start Live Streaming Server

Stop Live Streaming Server

Modify Live Streaming Server

User Login Failed	Start Remote Playback Server
Start Schedule	Stop Remote Playback Server
Stop Schedule	Modify Remote Playback Server
Execute Recycle	IP Camera Connection Lost
Enable Channel	Restart Windows
Disable Channel	IP Camera Connection Regained
Modify Schedule	IP Camera Parameter Changed
Modify Configuration	

Step1: Choose the type of event you wish the check or select “All” from the drop-down menu and view all types of events.

Step 2: You can either view the events that happened on a particular date or during a given time period. To search and view unusual event on a particular date, check the option right next to “Date” and select a specific date.

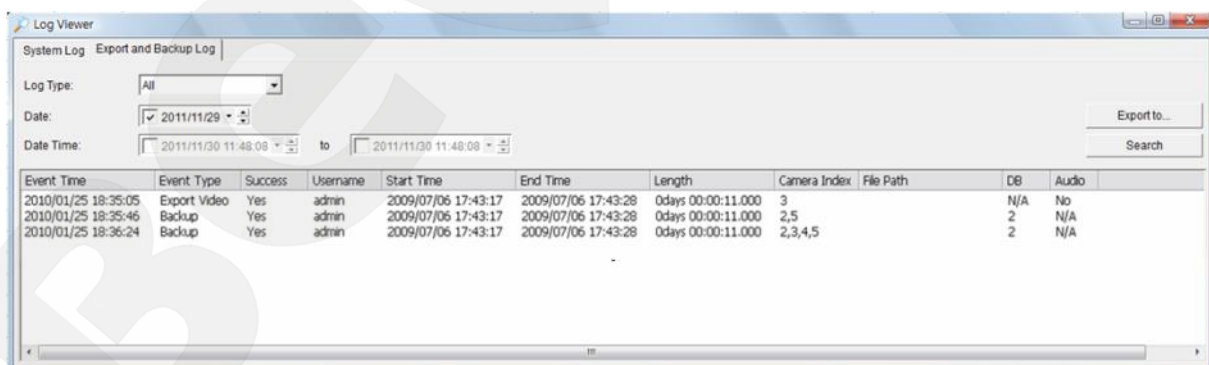
You may also point out two different time points and search for unusual event happened during the period. Check the options in the Date & Time columns and enter the date and time.

Step 3: Click **Search**.

Step 4: Save the System log.

Export and Backup Log: View the Export and Backup Log history that had been operated by local or remote user.

Step1: Choose the type of event you want to check or select All from the drop-down menu for all types of events (*Pic.3.6*).



Pic. 3.6

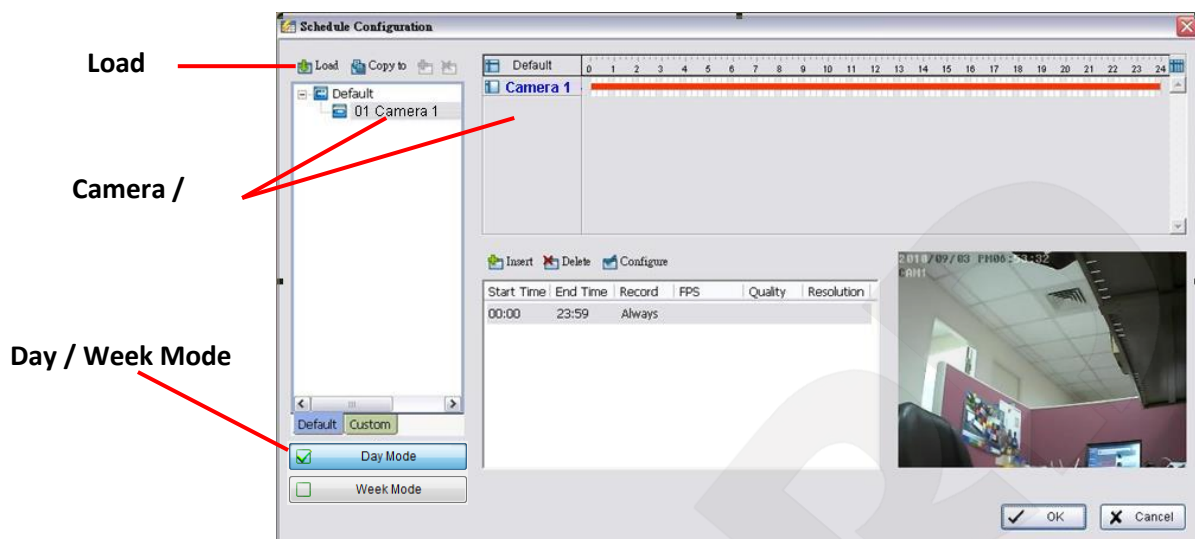
Step 2: View the events that happened on a particular date or during a given time period by selecting search period.

For a particular data: check the Date box right and indicate the date.

For a period: check the Date Time and then enter the date and time.

Step 3: Click **Search**.

Chapter 4. Schedule



Pic. 4.1

Click on the Schedule icon on the Main Console and set up the time duration for video recording on the schedule configuration panel (Pic.4.1).

4.1. Day Mode

Schedule the cameras to turn the recorder on and off at the same time every day according to your setting.

To setup the time schedule for each camera, you may

1. **Load** the preset modes or
2. **Insert** a new schedule manually

4.2. Load Preset Modes

Click on the Load icon for the drop-down menu.

Regular Mode: Video recording 24 hours a day with the setting of 30 FPS (frames per second), Normal video quality and Normal resolution.

Office Mode: Video recording from 8 am to 8 pm (08:00 – 20:00, shown on the red bar in the Schedule Configuration panel) with 30 FPS, Normal video quality, and Normal resolution.

Shop Mode: Video recording from 10 am to 10 pm (10:00–22:00) with 30 FPS, Normal video quality and Normal resolution.

High Security Mode: Video recording 24 hours a day with the setting of 30 FPS, the highest video quality, and High resolution.

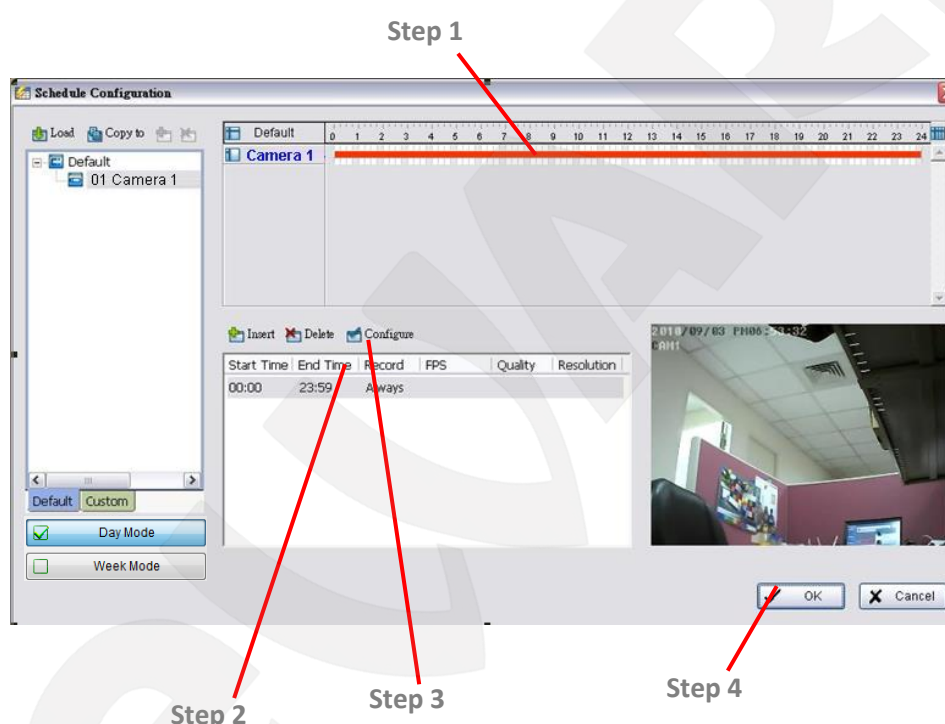
Disk Saving Mode: The system will start recording only when a motion is detected on the screen, 24 hours a day (shown on the green bar in the Schedule Configuration panel), with the

setting of 30 FPS, Normal quality, and Normal resolution. You can adjust the sensitivity, interval, and area of motion detection in the Schedule Configuration.

Minor Mode: The system will start recording only when a motion is detected on the screen, 24 hours a day (shown on the green bar in the Schedule Configuration panel), with the setting of 15 FPS, Low quality, and Low resolution. You can adjust the sensitivity, interval and area of motion detection in the Schedule Configuration.

4.3. Insert a New Schedule Manually

Step 1: Left-click and draw the bar you want to the time table. The scheduled time will show as a grey bar (*Pic.4.2*).



Pic. 4.2

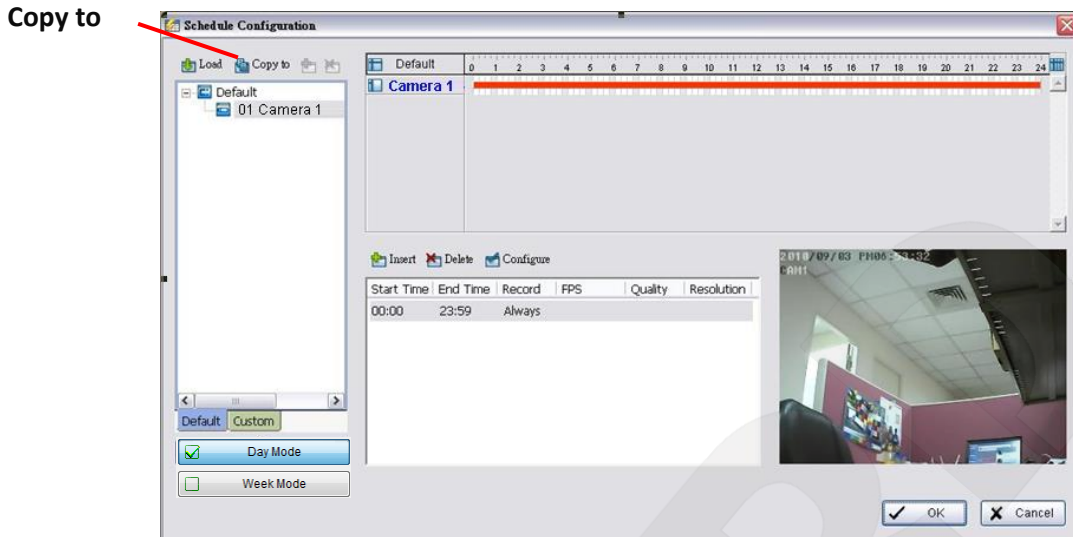
Step 2: Click the Insert icon and add a new schedule in the Regular Mode, i.e. to record video during the time period you set with 30 FPS, Normal video quality, and Normal resolution.

Step 3: Change the setting if wished by clicking on the Configure icon (See page 28) or double click the schedule information.

Step 4: Click OK.

4.4. Copy Schedule

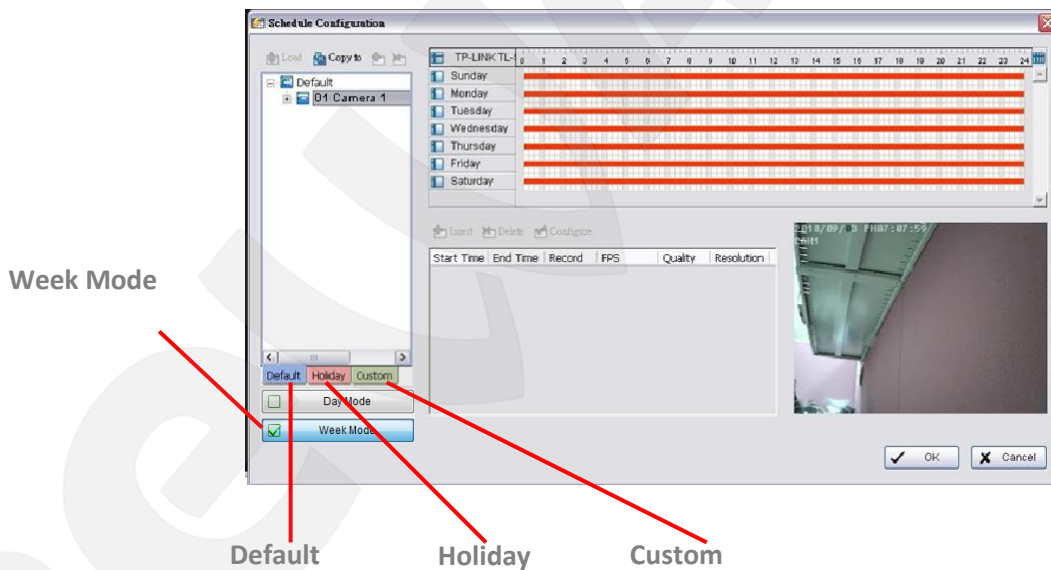
You may set up the schedule for each channel/camera by repeating the process above, or simply apply the setting of a single camera to all the others (*Pic.4.3*).



Pic. 4.3

4.5. Week Mode

Schedule the cameras for each day of the week differently. In addition, you may assign extra holidays under the Week Mode (Pic.4.4).



Pic. 4.4

Default: Follow the same process to setup the schedule for every day in a week.

Holiday: You may assign holidays where the system will work according to the setting of Sunday.

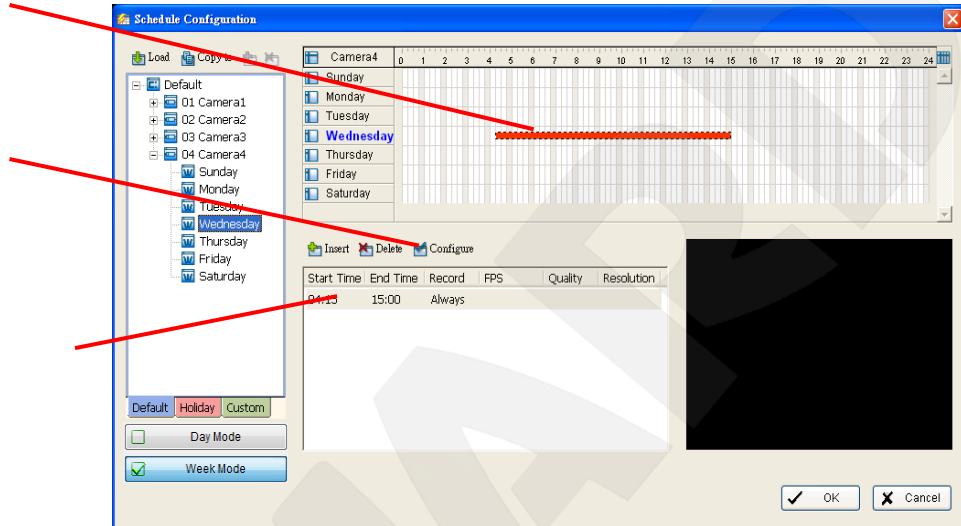
Custom: You can assign a particular date(s) on which the system will work according to a special schedule(s) different from the others.

4.6. Adjust the Scheduled Setting

You can manually change the setting at any time after you insert or load a period of schedule (Pic.4.5).

Option 1: Move the cursor to the **Time Bar** and change the length or move the bar sideways to change the start and end points.

Time Bar

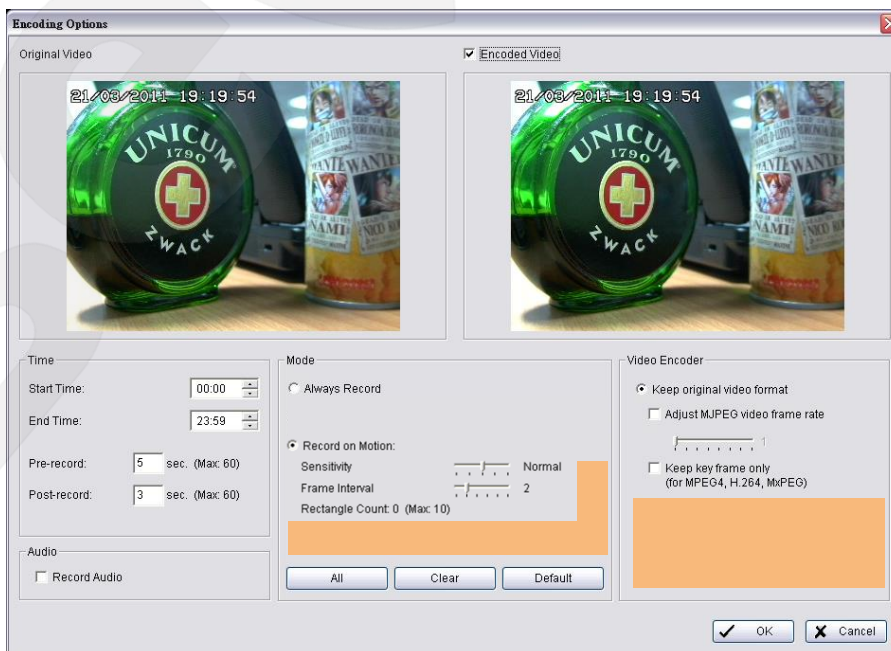


Pic. 4.5

Option 2: Click on the Configure icon or double click on schedule information on the screen (highlighted in blue) to obtain the Encoding Option panel and change the setting as wished.

Configure: Click on the configure icon to obtain the Encoding Option panel.

4.7. Encoding Option



Pic. 4.6

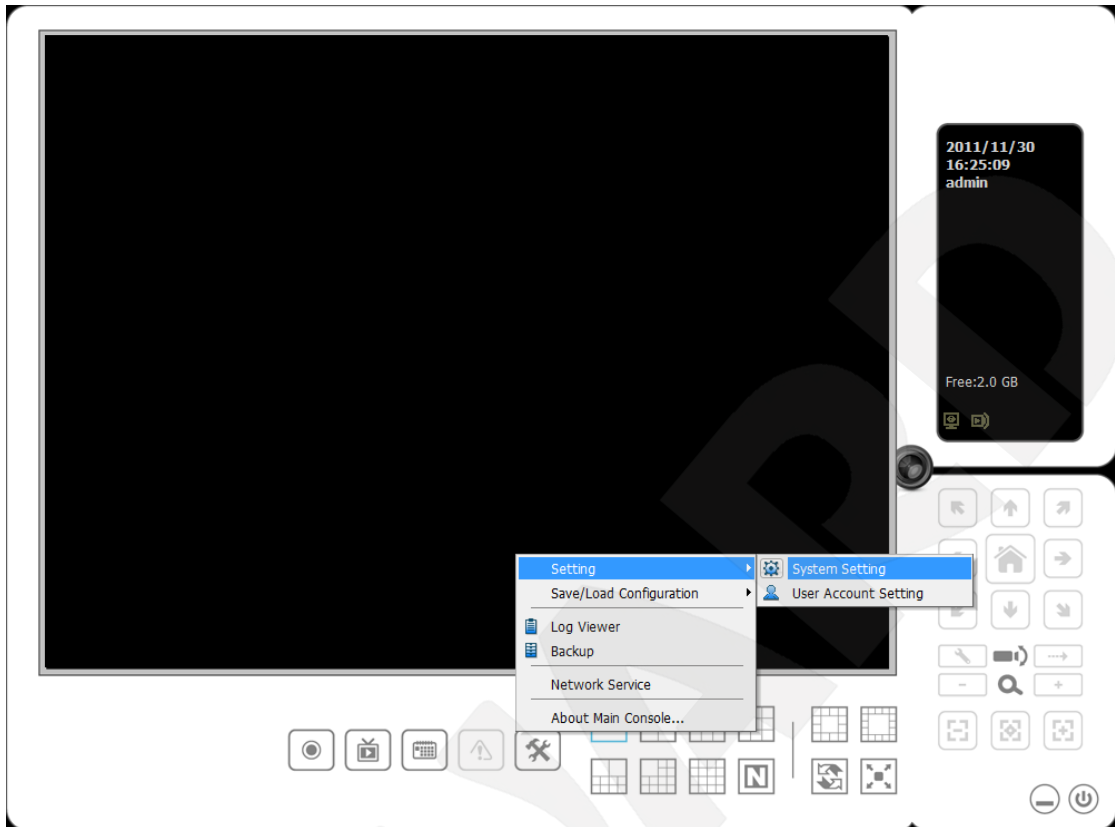
Always Record: Select this option to record the video at all time.

Record on Motion: Select this option to start recording when there are motions detected. To detect Motion, you have to define a detection zone. Left-click and drag the mouse to draw a detection zone. You may define more than one zone on the screen by repeating the same process. User can also click on “All” button to select the entire detection zone. You may adjust the sensitivity and the frame interval.

Pre-record/ Post-record Time: The pre-record/ post-record function saves the recording data accordingly. For instance, to set up a 5 second pre-record time means the system will start saving the recording data 5 seconds before the event happens.

Encoded Options: This option sets up the quality of the recorded video. The “Original Video” window is the original stream from the camera. The “Encoded Video” is preview of the recorded video corresponding with the encode settings below.

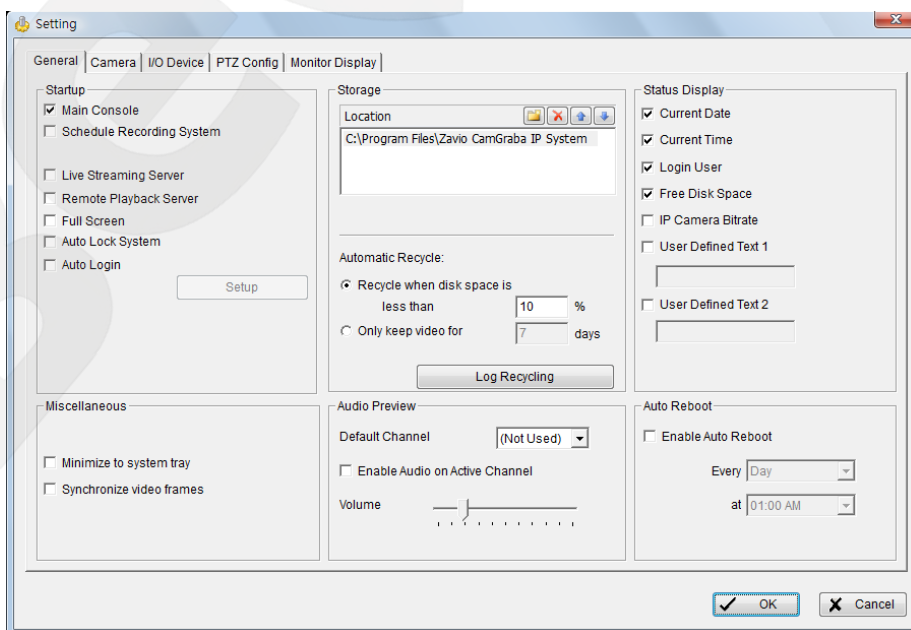
Chapter 5. Configuration



Pic. 5.1

Modify the setting, log viewer, backup, and network services. Click on the Config icon, select from the drop-down menu and open the Configuration panel (Pic.5.1).

5.1. Setting – General

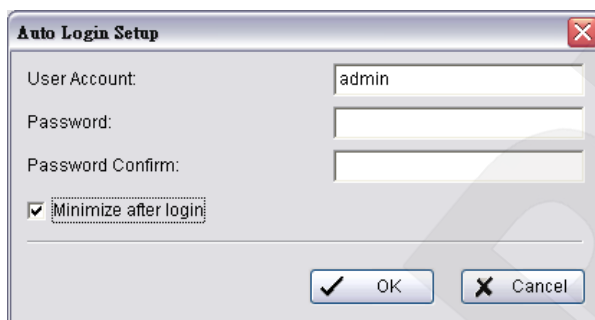


Pic. 5.2

5.1.1. Startup

Check the box and activate the functions as the system starts. You may start/stop the function in Monitor panel on the Main Console (Pic.5.2).

Setup Auto login: Enable “Auto login” and click the Setup button to obtain the Auto Login Setup panel, insert the User Account and Password to login automatically when the system starts. Enable the Minimize after login to minimize the Main Console window after login (Pic.5.3).



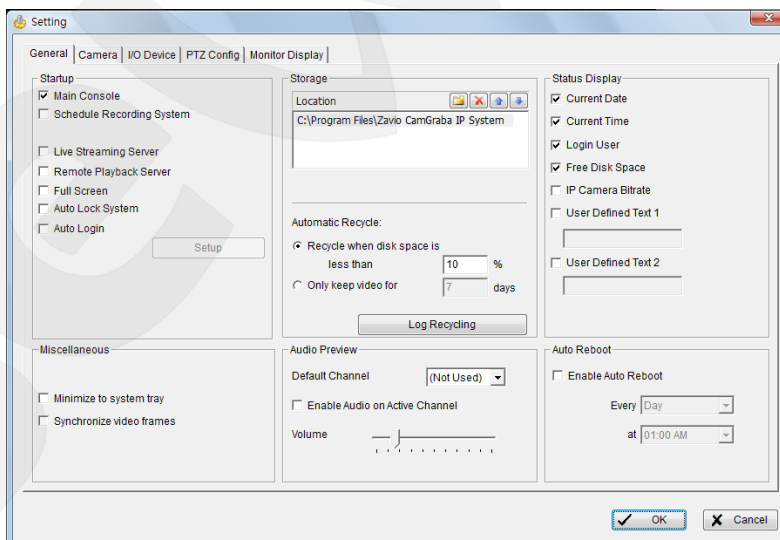
Pic. 5.3

5.1.2. Storage

Location: Assign the default folder (you can setup several directories for storage) for the system to store all data files. Recommend not to save in system HD (C :) to avoid PC efficiency drop when free storage is low (Pic.5.4).

If you have more than one drive available for recording, you may check “Enable Disk Load Balance” to evenly distribute recording to multiple drives.

This will increase efficiency of the system.



Pic. 5.4

Automatic Recycle: The system will automatically delete out-dated data to save storage space.

Recycle when disk space is: Set the standard limit to let the system recycle automatically.

Less than _ %: The system will start to recycle if the disk space is less than the indicated percentage (default is 10%).

NOTE:

1. The system will detect the storage space of default location firstly, if the default storage space is exhausted, the video will be stored to the next directory.
2. If all the status of locations exceeds the storage rule, the system will start recycling in an hour progress.

Only keep video for: Delete the video records that are older than the number of days set.

NOTE:

If the default storage spaces exhausted (disc space is less than 3%), the system will start to recycle by hourly period.

Log Recycling: Click the button to obtain the Advanced Recycle Setting panel. Set the days that you want to keep the event or Keep all event logs within interval of video files (*Pic.5.5*).

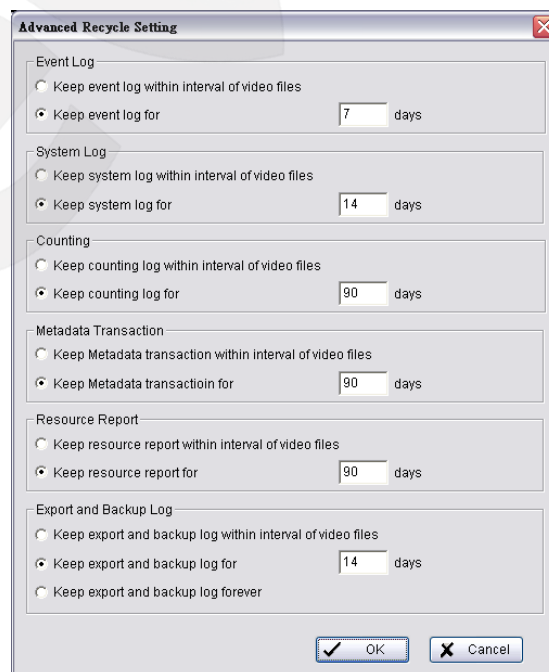
Event Log: Delete the event log data that is older than the number of days set.

System Log: Delete the system log data that is older than the number of days set.

Counting: Delete the counting application data that is older than the number of days set.

Metadata Transaction: Delete the metadata transaction data that is older than the number of days set.

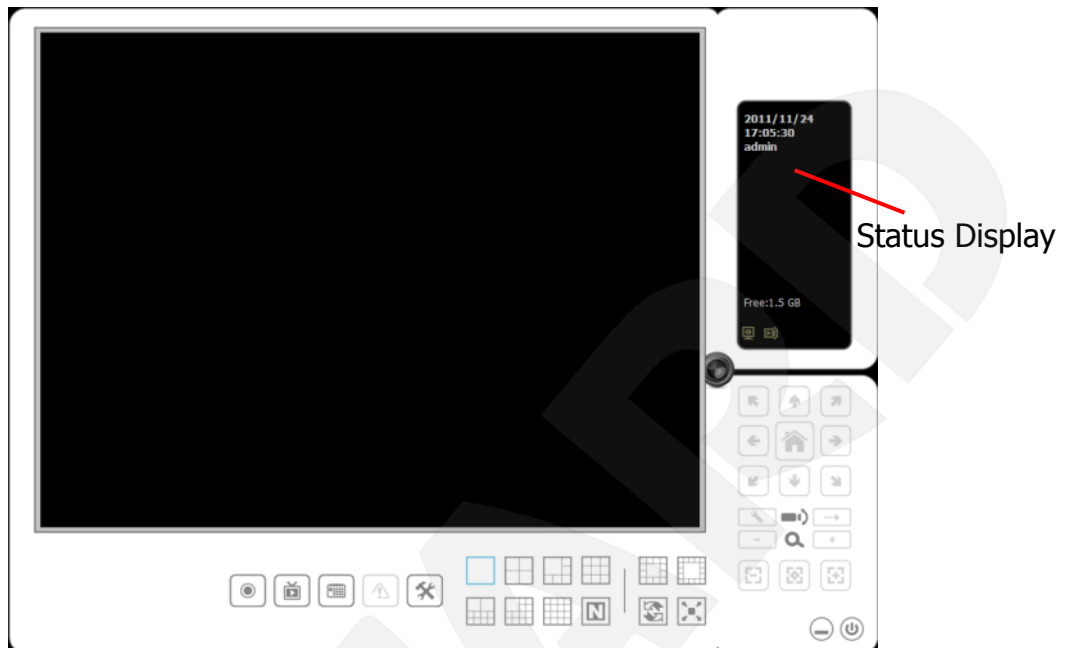
Resource Report: Delete the Resource report data that is older than the number of days set.



Pic. 5.5

5.1.3. Status Display

Check the boxes of the information that you wish to see in the information display window in the Main Console (*Pic.5.6*).



Pic. 5.6

5.1.4. Miscellaneous

Minimize to system tray: Enable the Option to minimize the Main console to be an icon in notification area of windows task bar when pressing the minimize button (*Pic.5.7*).



Pic. 5.7

NOTE:

Insert the username and password of MainConsole again when clicking the minimized MainConsole icon in notification area of windows task bar to start monitoring.

Synchronize video frames: Select to avoid image tearing problems that may occur while CPU loading is increased.

5.1.5. Audio Preview

Default Channel: Select the audio channel that you wish to hear from in "Default Channel".

Enable Audio on Active Channel: Select the “Enable Audio on Active Channel” option to hear the audio from the selected video channel (selected by mouse) on each video grid of Main Console. The default channel will play if no specific video channel is selected.

Volume: Adjust the volume with the “volume bar.”



System plays the audio of “default channel”



System plays the audio of the upper-left “selected channel”

5.1.6. Auto Reboot

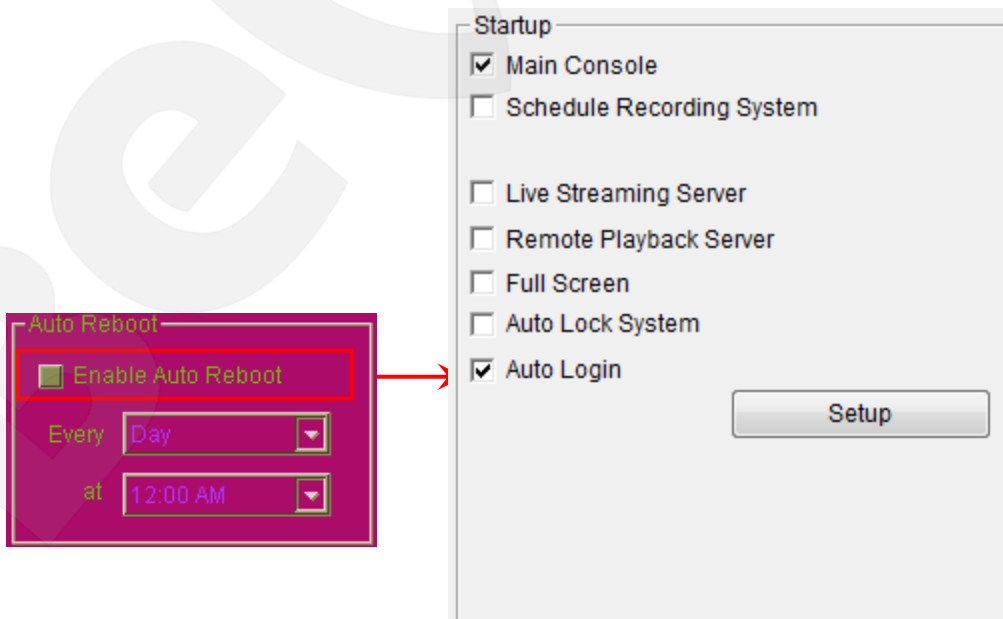
Check the option of “Enable Auto Reboot” so that you can reboot the system on the time you select (Pic.5.8).

Step 1: Check the option of “Enable Auto Reboot.”

Step 2: Select the time you want to reboot.

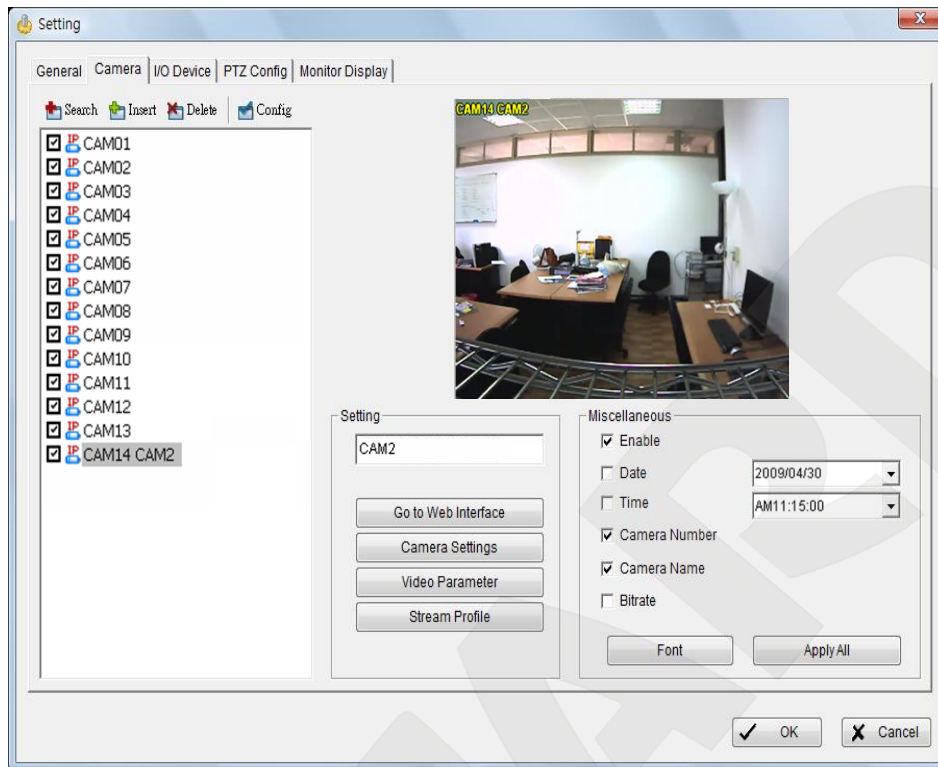
NOTE:

Enable “Main Console”, “Auto Login”, “Setup login account” and check other status in Startup section so when PC reboots the system will run normally.



Pic. 5.8

5.2. Setting – Camera

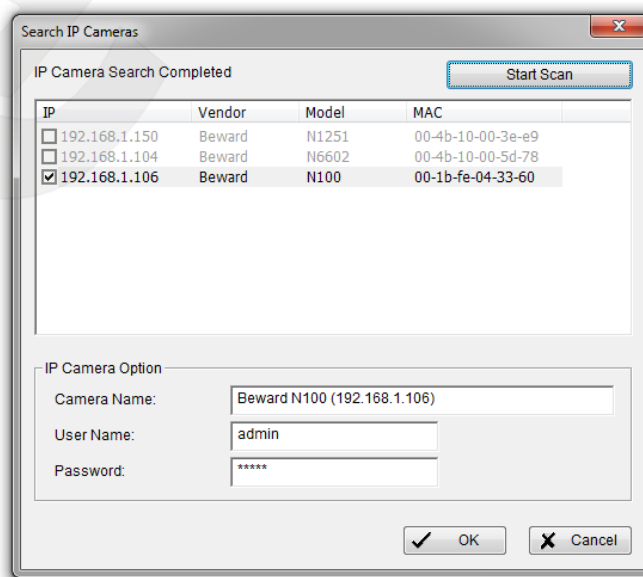


Pic. 5.9

5.2.1. Add Camera

Four function buttons will be included in the Setting/Camera panel if you have our Hybrid Surveillance System license for IP camera.

Search: Click on the Search icon to obtain the Search IP Camera panel. The system will start scanning automatically once the panel is opened; feel free to stop scanning by clicking on the Stop Scan button (Pic.5.10).



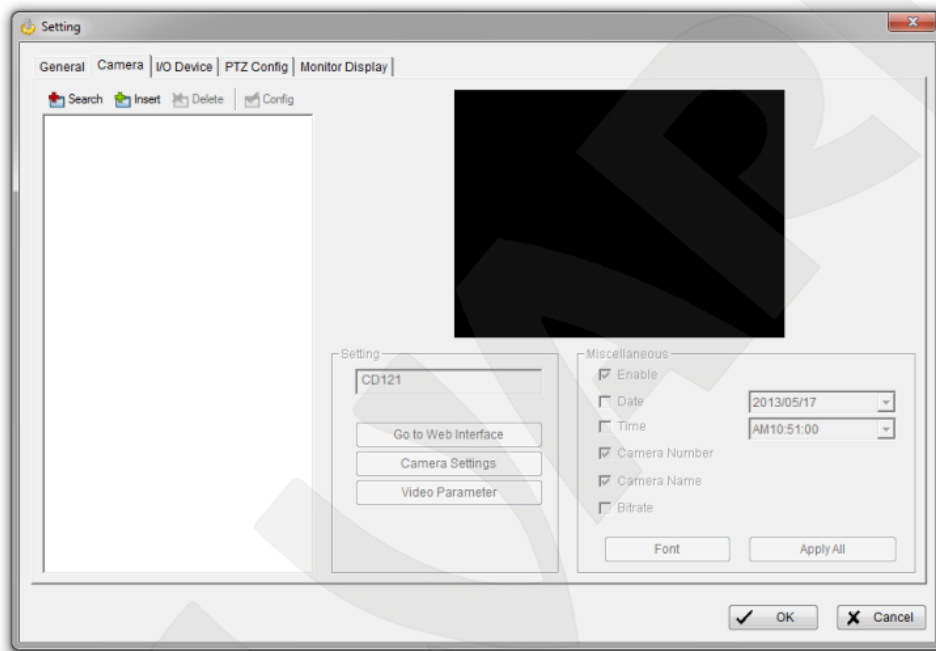
Pic. 5.10

Fill in the user name and password for each IP camera found and click OK to add it to the camera list.

Insert: Click on the Insert icon to obtain the IP/Video Server Setting panel and add IP cameras to the list.

Delete: Click on the delete button to remove the selected IP camera(s) from the system. Click OK to finalize the modification.

Config: Click on the Config button to obtain the IP/Video Server Setting panel. You can modify the IP camera settings with the Setting panel.



Pic. 5.11

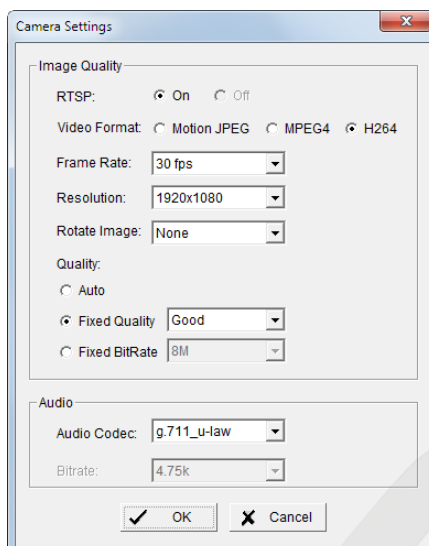
5.2.2. Setting

Camera List: The camera(s) connected to the system will show on the panel, click the name of the camera to adjust the setting.

Camera Name: Name the camera for your convenience.

Go to Web Interface: Go to vendor's website interface to configure the camera setting (optional).

Camera Settings: Set the camera parameter offered by camera vendor (Pic.5.12).



Pic. 5.12

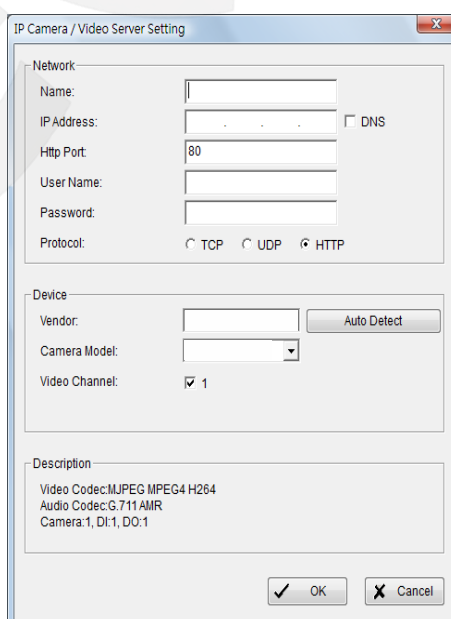
Video Parameter: Adjusts the video's brightness, contrast, saturation, and color hue values.

Stream Profile: Stream profiles are pre-defined to preferred settings which will respond from the query of the remote live view function. Each profile has different Format, Frame, Resolution, Quality and Bit rate (Kbps) settings.

5.2.3. Miscellaneous

Select the information that you wish to see in the on-screen display, or the sub-screen of the camera.

5.2.4. IP Camera / Video Server Setting Panel



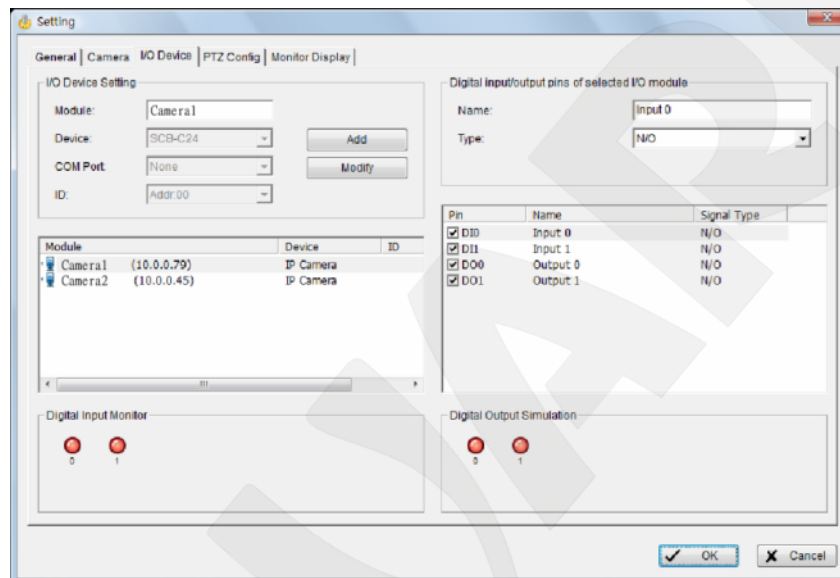
Pic. 5.13

Network: Fill up the Network field (including Name, IP Address, Http Port, User Name, Password and Protocol) referring to the instruction provided by the camera manufacture. Check “Use DNS” to use domain name instead of IP address.

Device: Choose the IP camera manufacturer from the drop-down menu. Click on “Auto Detect” and the model name will show in the box.

Description: Show information of the IP camera.

5.3. Setting - I/O Device



Pic. 5.14

Module Setting: Name the module device and ID that has been connecting the digital input/output device(s) to your system.

Device: This column displays the device(s) already installed to the system.

ID: Select the number of the I/O port to which you plug the ribbon cable.

Input Monitor: The device(s) is turned on if the dot is in red. By triggering the digital input device, the related icon will light up. This is used to check if the device is correctly connected or not.

Output Monitor: The device(s) is turned on if the dot is in red. By clicking on the icon, you may trigger the digital device connecting to the system. This can be used to test if the output device is correctly connected.

Device Setting

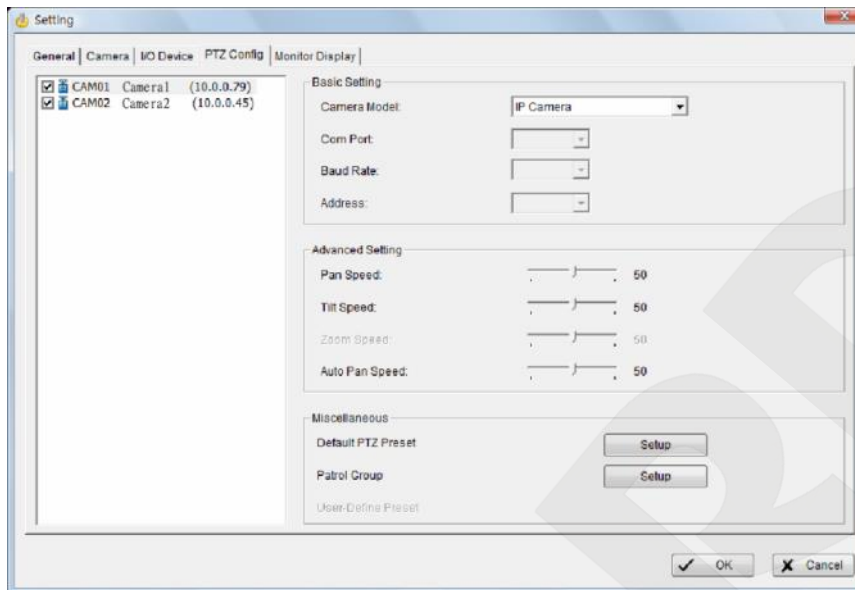
Name: Insert the name of the device (input and output).

Type: Select the device type from the drop-down menu.

N/O: Normal Open.

N/C: Normal Close.

5.4. Setting - PTZ Config



Pic. 5.15

Install PTZ cameras following the instruction of the camera manufacturers. A PTZ camera is usually connected to the PC with RS-485/RS-422.

Check the box on the camera list to activate the PTZ control function of a PTZ camera.

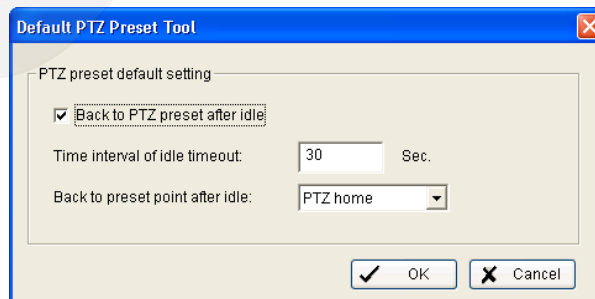
Basic Setting: Select the camera model, com port, baud rate, and address according to your PTZ camera.

Advanced Setting: You may setup the pan speed, tilt speed, zoom speed and auto pan speed. Adjust the settings by dragging the bars.

Miscellaneous:

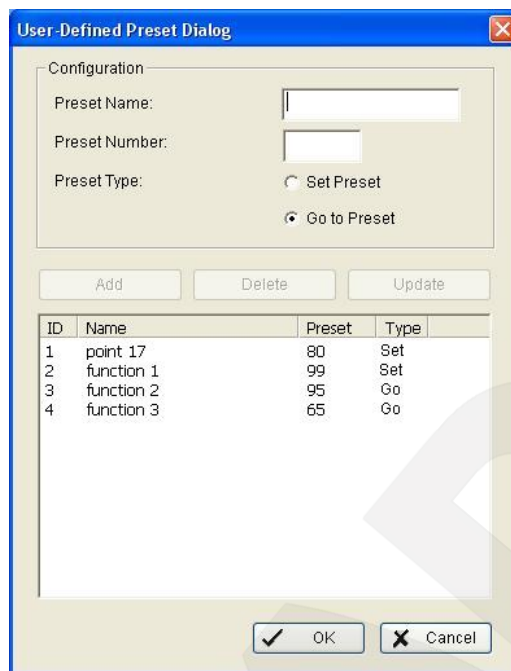
Patrol Group: You can setup the Patrol Group, please see page 12 for detail.

Default PTZ Preset: By enabling this function, the PTZ camera will automatically go back to a default preset point when no PTZ commands are under action. To enable this option, check "Back to PTZ preset after idle" and define idle periods and a default preset point (Pic.5.16).



Pic. 5.16

User-Defined Preset: User-Defined Preset for the analog speed dome can trigger the extra-function of the speed dome itself, for example auto-tracking, login menu of camera, etc. You can refer to the detailed description of each analog speed dome on its user manual (Pic.5.17).



Pic. 5.17

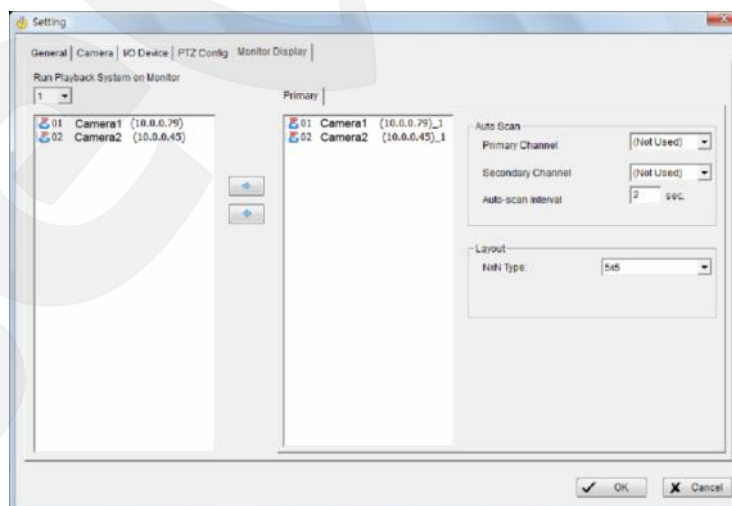
Step 1: Type the Preset Name.

Step 2: Type the Preset Number.

Step 3: Select the Preset Type.

Step 4: Press the buttons to Add, Delete, or Update preset setup.

5.5. Setting – Monitor Display



Pic. 5.18

Playback Option: Execute Playback on the secondary monitor by checking the box. Make sure to adjust the display setting of your computer in advance to avoid system error.

Cameras List: The left side displays a list of all cameras; modify the cameras shown on primary/ secondary monitor in the right window.

Auto Scan: Activate auto scan to rotate the channels/ cameras on the display screen.

For instance, you may select to show only 4 sub-screens on the main console while having 16 channels connected to the system. With auto scan function, you will be able to see all 16 channels by turns. You can set up a primary channel that will always be on the screen and a secondary channel that has secondary priority.

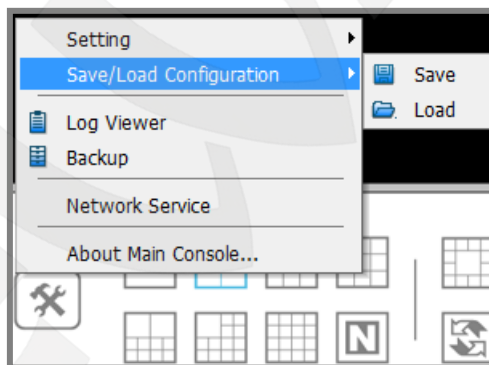
Layout: Choose the number of divisions for NxN division on the Main Console screen.

5.6. Save/ Load Configuration

The Save/ Load Configuration function allows system users to save any specific setting as a CFG (config) file. You may save up several different CFG files at any time (*Pic.5.19*).

Save Configuration: To save a specific setting, go to Config > Save/ Load Configuration > Save. In the popup window, type in the file name and then save it as a CFG file.

Load Configuration: To load a specific setting, go to Config > Save/ Load Configuration > Load. In the popup window, go to the directory that you saved the CFG files at, select any one of them and then click OK to load the file. Main Console will be automatically shut down after loading a new configuration. Please re-start Main Console manually.



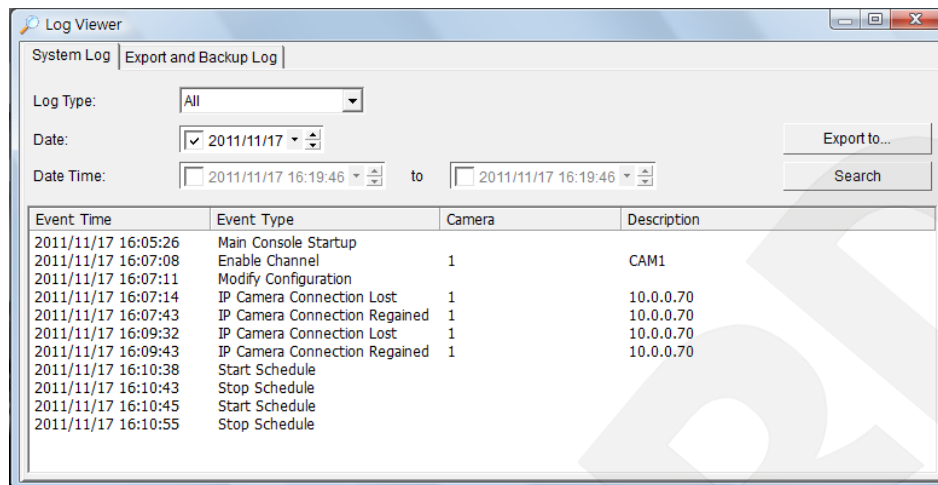
Pic. 5.19

NOTE:

Main Console will be automatically shutdown after loading a new configuration. Please re-start Main Console manually.

5.7. Log Viewer

5.7.1. Log Viewer – System Log



Pic. 5.20

System Log: View the history and export reports of unusual events detected by the Smart Guard System. (Pic.5.20)

Step 1: Choose the type of event you want to check or select All from the drop-down menu for all types of events. Select Log Type from the drop-down menu. There are in total 21 types of log types, including:

- | | |
|-----------------------|-------------------------------|
| Main Console Startup | Start Live Streaming Server |
| Main Console Shutdown | Stop Live Streaming Server |
| User Login | Modify Live Streaming Server |
| User Login Failed | Start Remote Playback Server |
| Start Schedule | Stop Remote Playback Server |
| Stop Schedule | Modify Remote Playback Server |
| Execute Recycle | IP Camera Connection Lost |
| Enable Channel | Restart Windows |
| Disable Channel | IP Camera Connection Regained |
| Modify Schedule | IP Camera Parameter Changed |
| Modify Configuration | |

Step 2: View the events that happened on a particular date or during a given time period by selecting search period.

For a particular date: check the **Date** box right and indicate the date.

For a period: check the **DateTime** and then enter the date and time.

Step 3: Click **Search**

You may also point out two different time points and search for unusual events happened during the period. Mark the box in the Date&Time column and then enter the date and time.

Step 4: Save the System Log**5.7.2. Export and Backup Log**

View the Export and Backup Log history that had been operated by local or remote user.

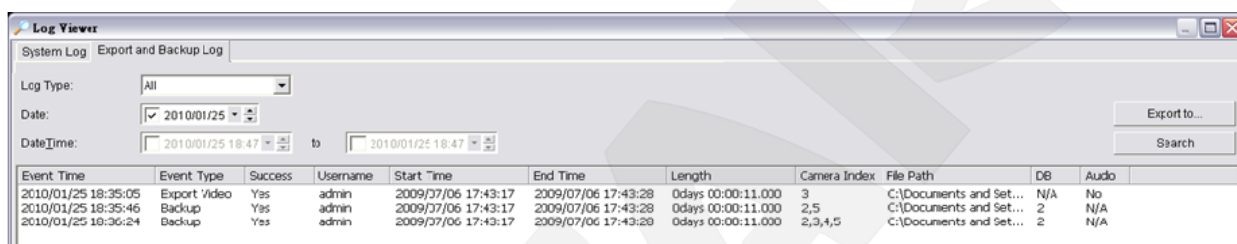
Step 1: Choose the type of event you want to check or select All from the drop-down menu for all types of events.

Step 2: View the events that happened on a particular date or during a given time period by selecting search period.

For a particular data: check the **Date** box right and indicate the date.

For a period: check the **DateTime** and then enter the date and time.

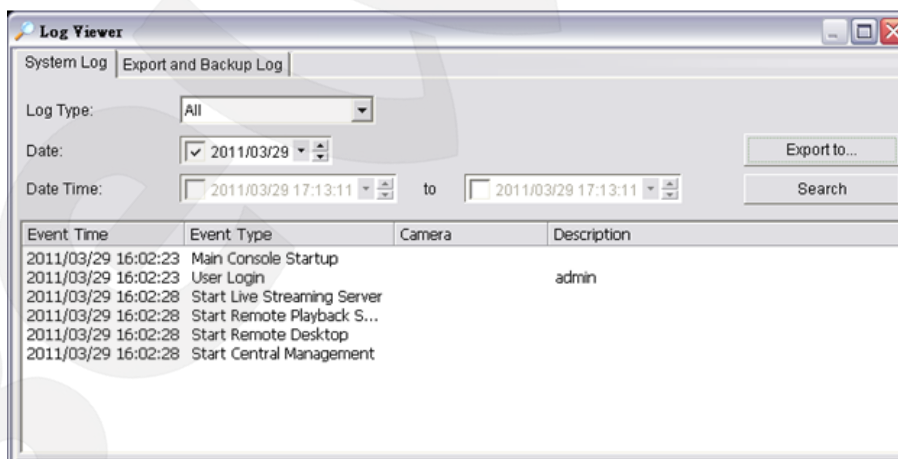
Step 3: Click **Search** (Pic.5.21).



Pic. 5.21

5.8. Export

After each log search, export needed info to .xls or .txt files (Pic.5.22).



Pic. 5.22

Step 1: Press the button Export to.

Step 2: Type the file name and choose the file format: .xls (Pic.5.23) or .txt (Pic.5.24).

D1	A	B	C	D	E
1	Event/Time	Event/Type	Description		
2	2007/09/12 00:45:41	Main Console Startup			
3	2007/09/12 00:45:44	User Login	admin		
4	2007/09/12 01:11:10	Main Console Shutdown			
5	2007/09/12 01:27:04	Main Console Startup			
6	2007/09/12 01:27:05	User Login	admin		
7	2007/09/12 01:28:27	Main Console Shutdown			
8	2007/09/12 15:06:51	Main Console Startup			
9	2007/09/12 15:06:52	User Login	admin		
10	2007/09/12 15:07:04	Main Console Shutdown			
11	2007/09/12 15:08:28	Main Console Startup			
12	2007/09/12 15:08:40	Main Console Shutdown			
13	2007/09/12 15:08:54	Main Console Startup			
14	2007/09/12 15:09:01	Main Console Shutdown			
15	2007/09/12 15:14:11	Main Console Shutdown			
16	2007/09/12 15:14:12	Main Console Shutdown			
17	2007/09/12 15:14:31	Main Console Startup			
18	2007/09/12 15:15:20	Main Console Shutdown			
19	2007/09/12 19:44:15	Main Console Startup			
20	2007/09/12 19:44:58	Main Console Shutdown			
21	2007/09/12 22:51:57	Main Console Startup			
22	2007/09/12 22:51:59	Main Console Shutdown			
23	2007/09/12 22:52:14	Main Console Startup			
24	2007/09/12 22:52:18	User Login	admin		
25	2007/09/12 22:52:24	Main Console Shutdown			
26	2007/09/12 22:53:19	Main Console Startup			

Pic. 5.23

```

2007/09/12 00:45:41, Main Console Startup,
2007/09/12 00:45:44, User Login, admin
2007/09/12 01:11:10, Main Console Shutdown,
2007/09/12 01:27:04, Main Console Startup,
2007/09/12 01:27:05, User Login, admin
2007/09/12 01:28:27, Main Console Shutdown,
2007/09/12 15:06:51, Main Console Startup,
2007/09/12 15:06:52, User Login, admin
2007/09/12 15:07:04, Main Console Shutdown,
2007/09/12 15:08:28, Main Console Startup,
2007/09/12 15:08:40, Main Console Shutdown,
2007/09/12 15:08:54, Main Console Startup,
2007/09/12 15:09:01, Main Console Shutdown,
2007/09/12 15:14:11, Main Console Startup,
2007/09/12 15:14:12, Main Console Shutdown,
2007/09/12 15:14:31, Main Console Startup,
2007/09/12 15:15:20, Main Console Shutdown,
2007/09/12 19:44:15, Main Console Startup,
2007/09/12 19:44:58, Main Console Shutdown,
2007/09/12 22:51:57, Main Console Startup,
2007/09/12 22:51:59, Main Console Shutdown,
2007/09/12 22:52:14, Main Console Startup,
2007/09/12 22:52:18, User Login, admin
2007/09/12 22:52:24, Main Console Shutdown,
2007/09/12 22:53:19, Main Console Startup,
    
```

Pic. 5.24

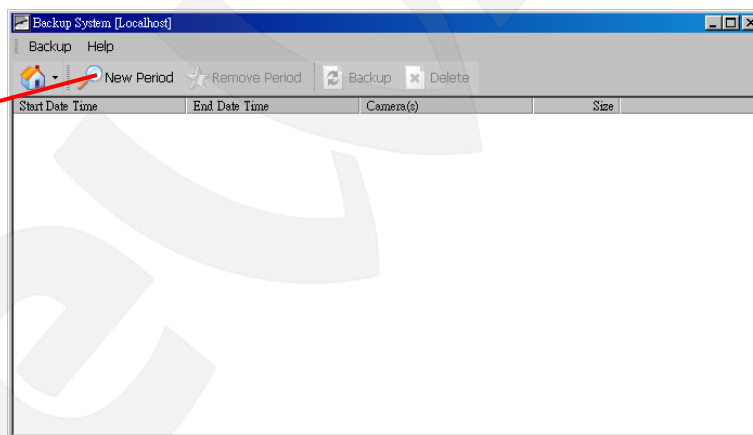
5.9. Backup

5.9.1. Backup

The backup function saves recorded video and other log information. Backup files may be reloaded on any PC with the Playback System installed. Follow the instructions below for more information on obtaining backup files.

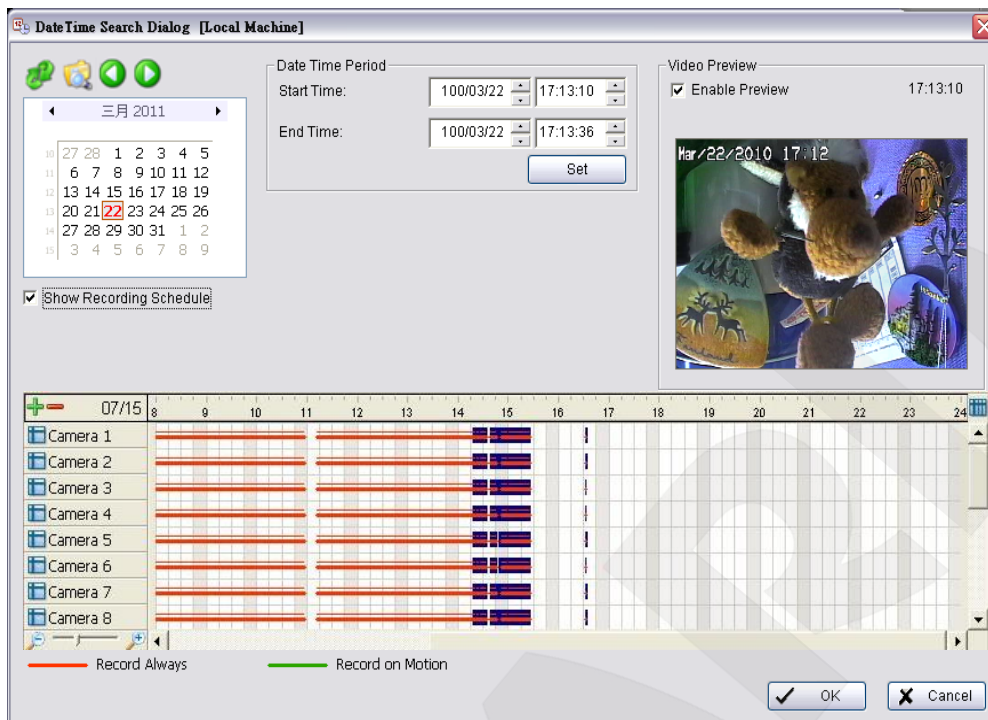
Step 1: Click on “New Period” to obtain the Select Date/Time Period panel (Pic.5.25).

Step 1



Pic. 5.25

Step 2: Select the data you want to backup by highlighting the time period. Besides the time-table, you may also set up start time and end time in the Date Time Period section (Pic.5.26).



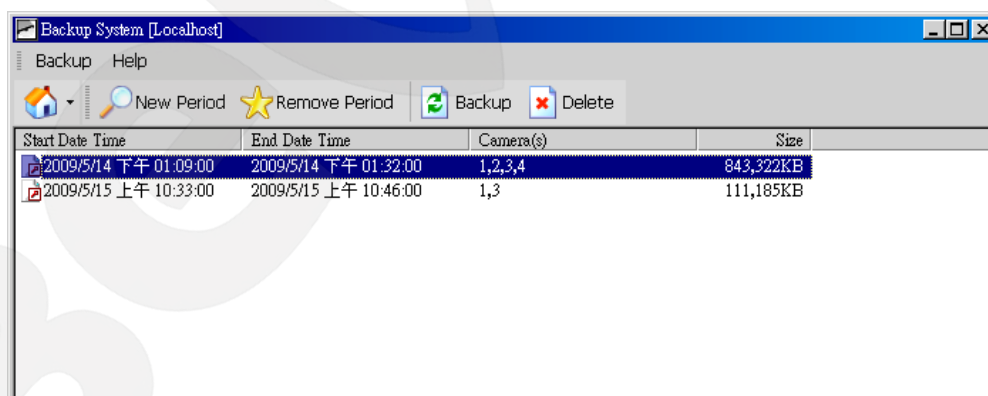
Pic. 5.26

Step 3: Click on the camera number icon to add camera(s) or click Select All to add all the cameras.

Step 4: Check the box of Enable Preview to get the preview of the video you select.

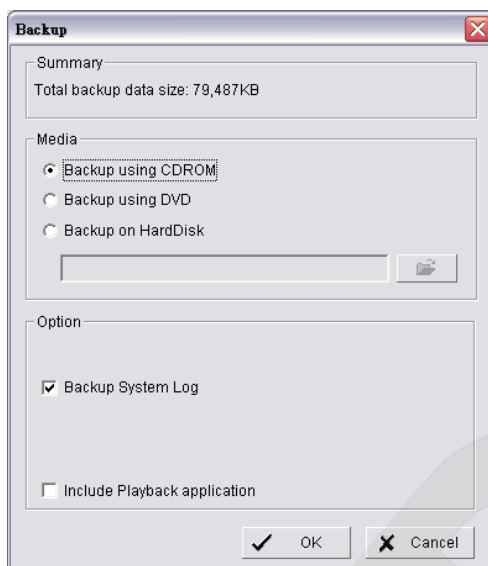
Step 5: Click OK when the settings are complete and go back to the Backup panel.

Step 6: If there is any data period not wanted, click Remove Period to remove the data period on the backup list (Pic.5.27).



Pic. 5.27

Step 7: Click the Backup icon to obtain Backup panel.



Pic. 5.28

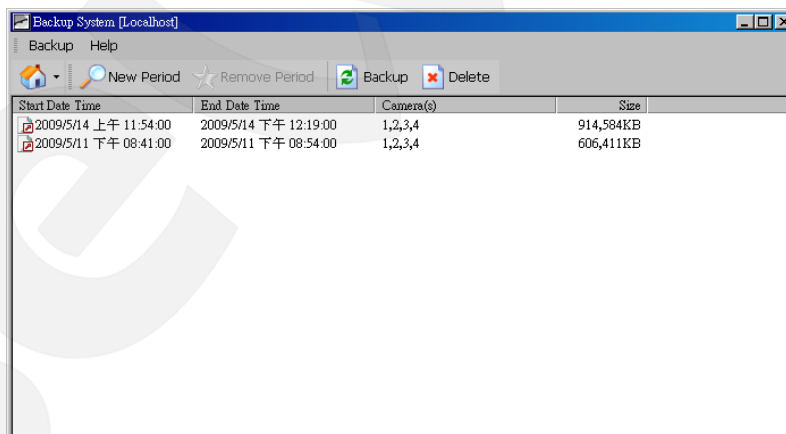
Step 8: Summary: Check the summary section to see the size of the file(s).

Step 9: Media: Choose the path you want to save the file or burn the file into a CD (direct CD burning for Windows XP only), DVD or on Hard Disk.

Step 10: Option: Select the log information you would like to backup (Event Log, System Log, Counter Log and Metadata Transaction), and then click OK.

5.9.2. Delete Recorded Information from the System

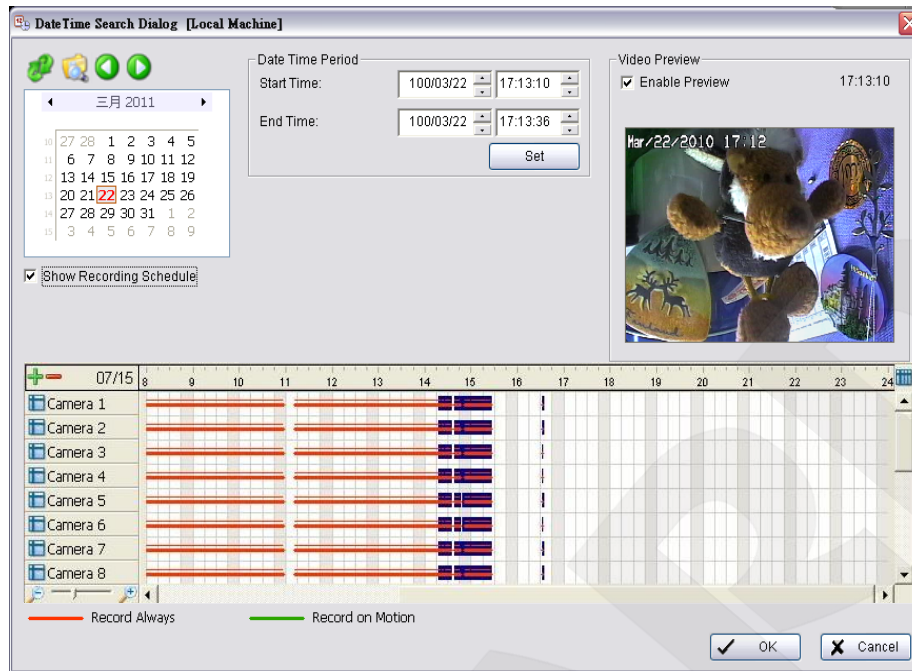
Step 1: Click on “New Period” to obtain the Select Date Time Period panel (Pic.5.29).



Pic. 5.29

Step 2: From the record date section, select the date you want to delete the file from. You will see color lines appear in the time table implying available data. Red, green, and blue stands for record always, record on motion, and record on event data files, respectively.

Step 3: Select the data you want to delete by highlighting the time period. Besides the time-table, you may also set up start time and end time in the Date Time Period section (Pic.5.30).

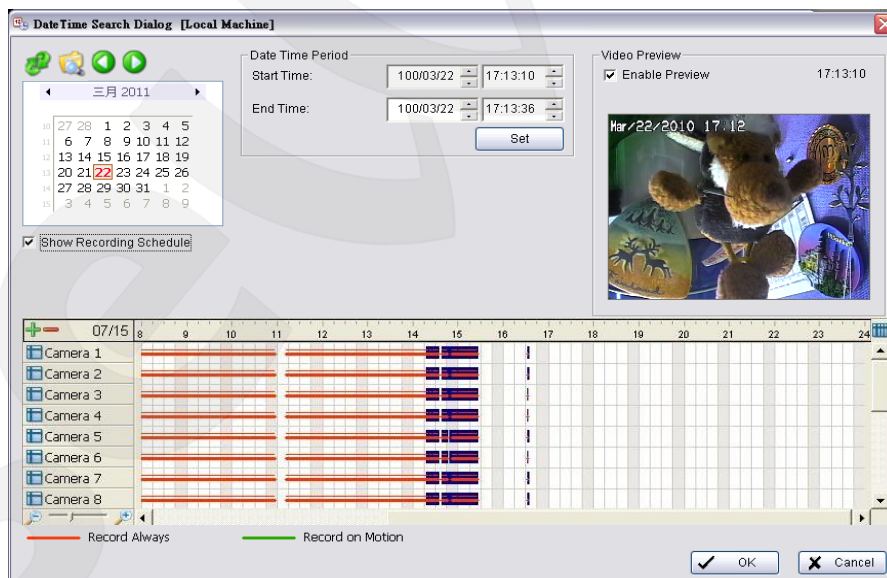


Pic. 5.30

Step 4: Click on the camera number icon to add camera(s) or click Select All to add all the cameras.

Step 5: Check the box of Enable Preview to get the preview of the video you select.

Step 6: Click OK when the settings are complete and go back to the Backup panel.

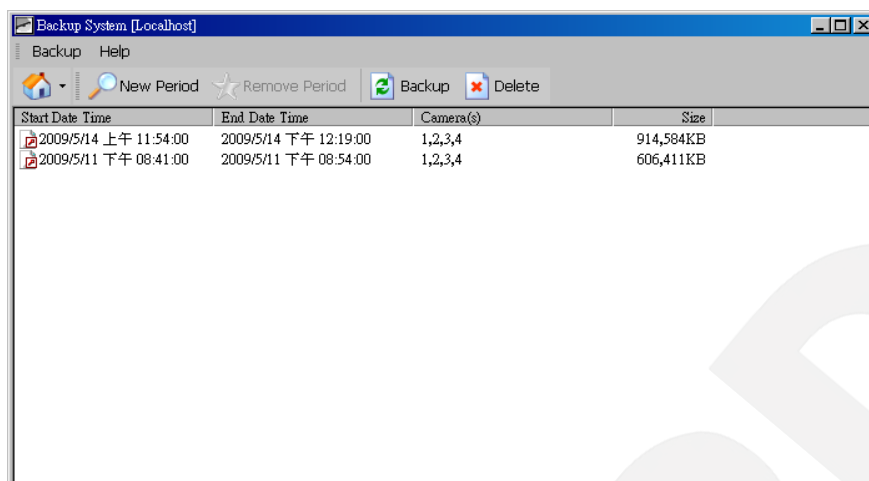


Pic. 5.31

Step 7: Click on the “Delete” icon and delete the data.

NOTE:

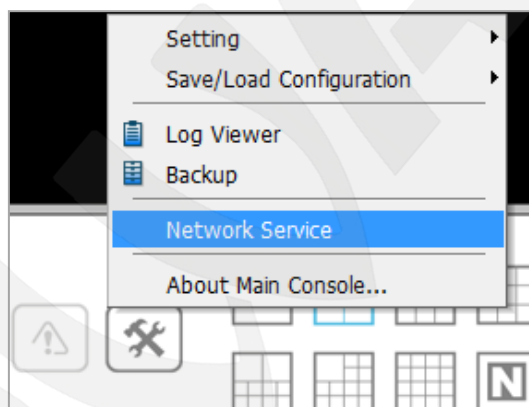
The deleted video cannot be recovered.



Pic. 5.32

5.10. Network Service

There are 3 types of network services: live streaming server, remote playback server, and 3GPP service. From the Main Console, go to Config > Network Service to obtain the Network Service panel (Pic.5.33).



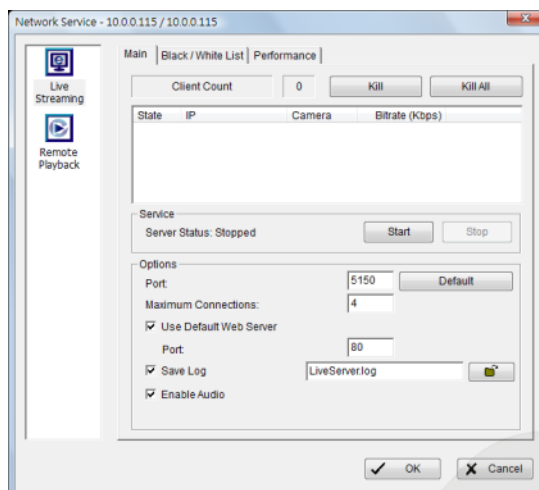
Pic. 5.33

5.10.1. Live Streaming Server

When starting the live streaming function of your computer, you allow remote users to log on to the specific computer and view cameras that are connected to it (Pic.5.34). As system administrator, you are able to monitor these accounts in order to maintain the system efficiency.

Main: On Live Streaming Server panel, you can see the clients who are currently logging on to your computer and watching the live video from the remote side.

Start: By starting the system, you turn the computer into a live streaming server; thus allow remote users to log on to the system.



Pic. 5.34

Kill: Highlight an IP address and click on the “Kill Client” button to block a client from your system.

Kill All: By clicking on this button, you may block all the clients logging to your system.

Stop: Stop broadcasting live stream video.

Options: You may only adjust the setting when the server is stopped.

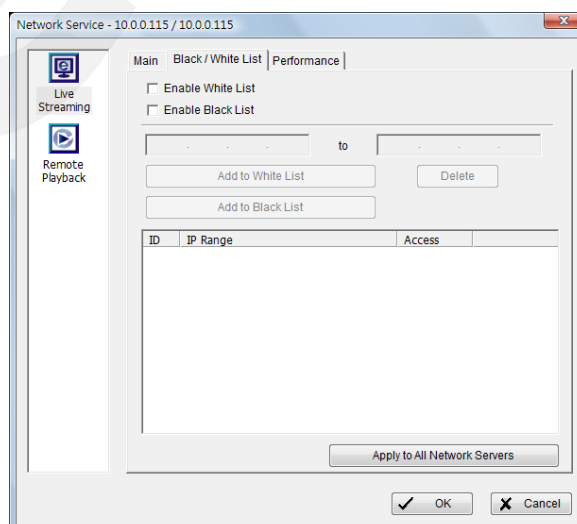
Port: Assign a port for the clients to connect to your system to the network.

Maximum Connections: Number of connections that are allowed to connect to your system. One camera video counts as one connection.

Use Default Web Server: Activate the Web server by checking the box; clients will be able to watch live video via Internet Explorer. The port for live streaming server is set to 80 by default. (*must check this item for system access via IE)

Save Log: Save the log information at appoint folder.

Black/ White List (Pic.5.35)



Pic. 5.35

White List: Check the “Enable White List” box to activate the white list filter. Only IP from the white list is allowed to log in.

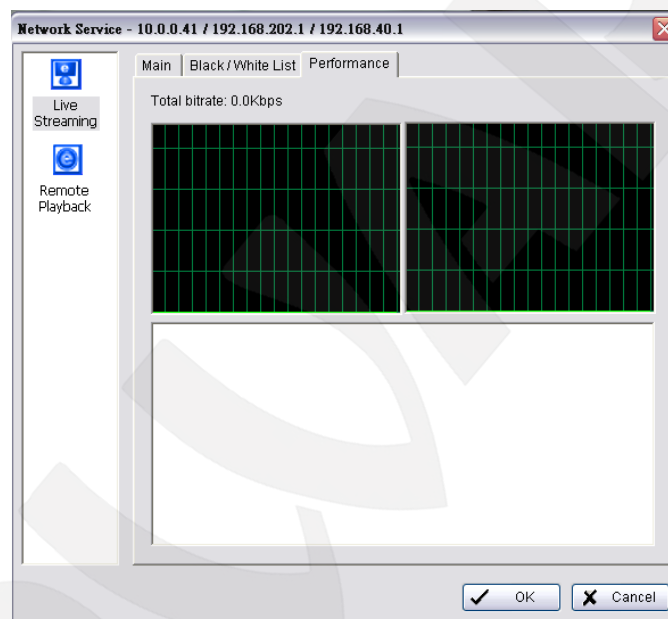
Black List: Check the “Enable Black List” box to activate the black list filter. IP from the black list will be blocked.

IP Address: Enter an IP address into the IP address field on the left. To add an IP address range to the system, enter 2 sets of IP address to indicate a series of IPs.

Add/Delete: To Add the IP(s) onto the list or remove it from the list.

Apply to All Network Servers: To apply the setting to both live streaming server and remote playback server.

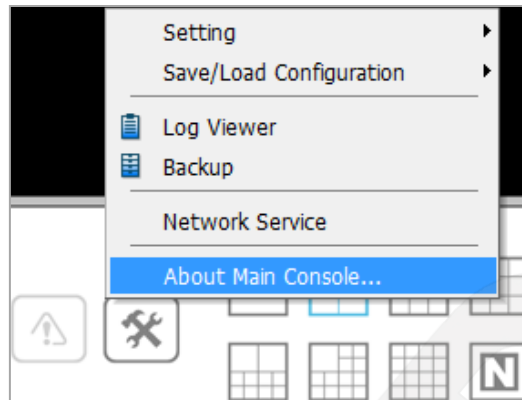
Performance



Pic. 5.36

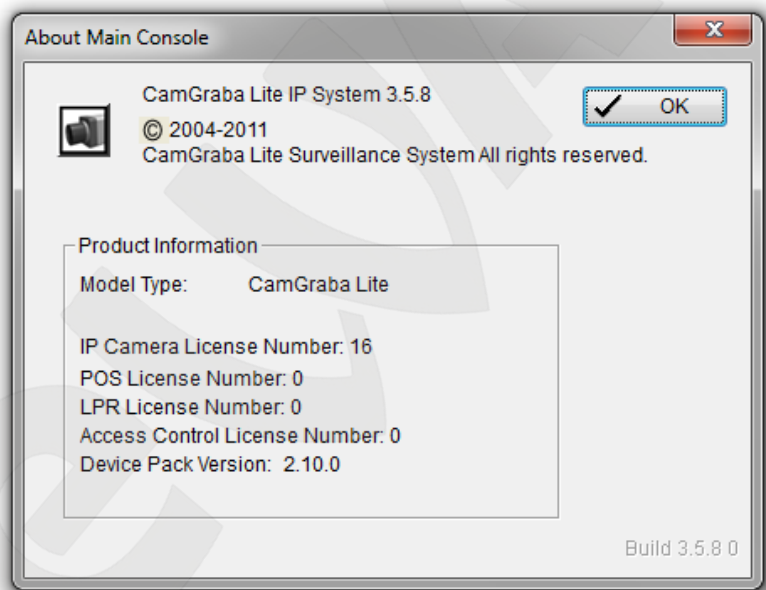
5.11. About Main Console

Go to About Main Console to view the version of your surveillance system and the hardware information (*Pic.5.37*).



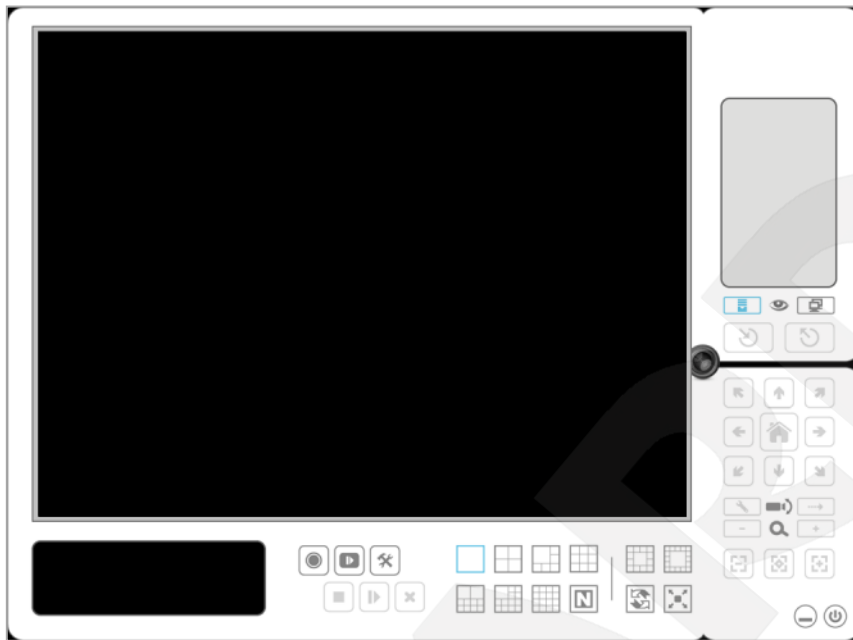
Pic. 5.37

You will see this window displaying information about installed surveillance software (*Pic.5.38*).



Pic. 5.38

Chapter 6. Remote Live Viewer



Pic.6.1

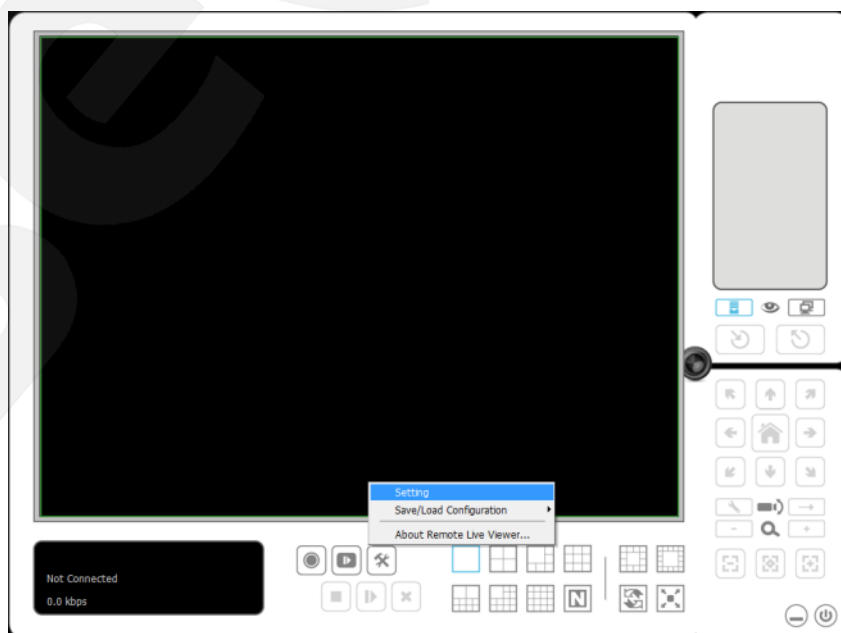
With the Remote Live Viewer console, remote users may watch real-time video from remote live streaming servers (Pic.6.1).

NOTE:

Only support 1 channel at the same time for Remote Live Viewer.

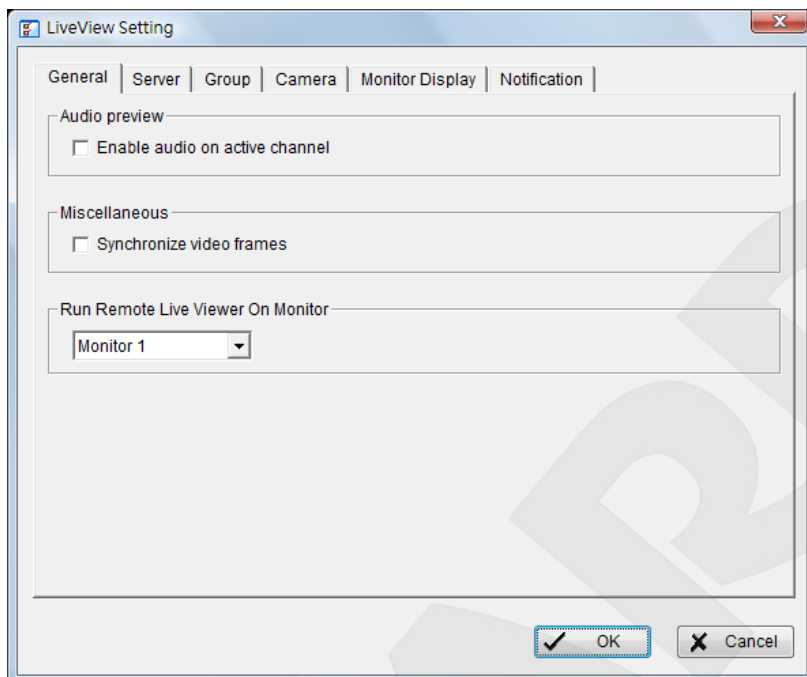
6.1. Setup Panel

Click General Setting to obtain setting dialog (Pic.6.2).



Pic.6.2

6.1.1. General Setting

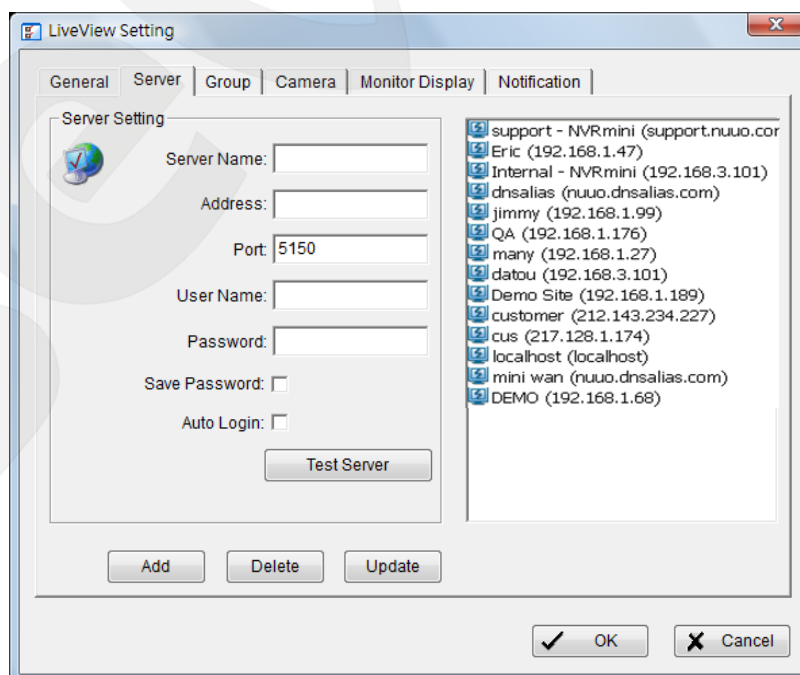


Pic.6.3

Audio preview: Enable audio on active channel: Select to enable audio streaming on active channel (Pic.6.3).

Miscellaneous: Synchronize video frames: Select to avoid image tearing problems that may occur while CPU loading is increased (Pic.6.3).

6.1.2. Server Setting



Pic.6.4

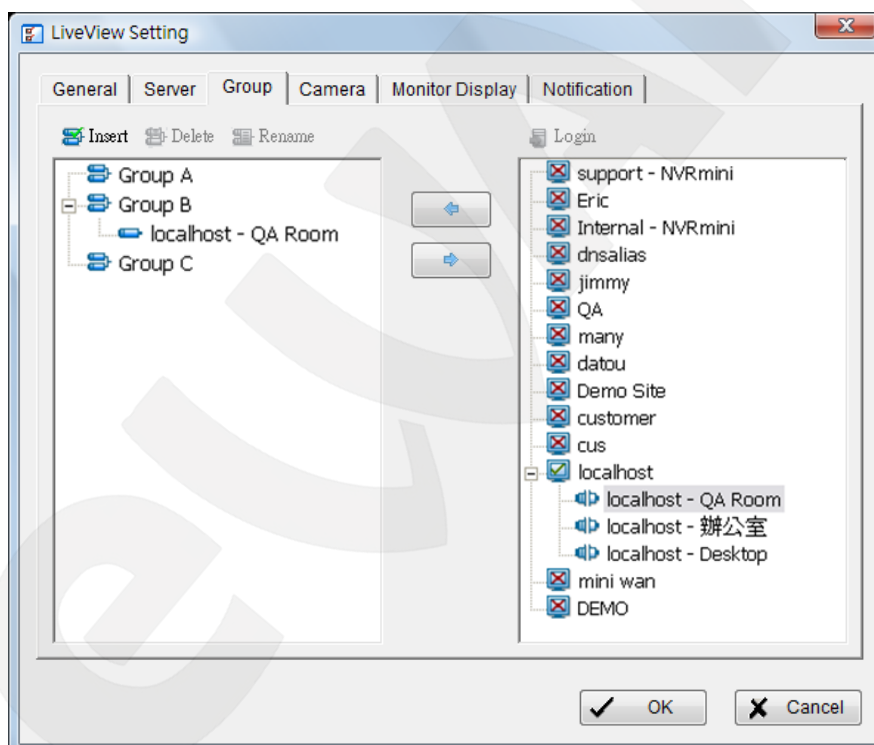
- Step 1:** Enter the Server Name.
- Step 2:** Enter the Address, Port, User Name, and Password to log in the server.
- Step 3:** Enable “Save Password” to login without entering the password again.
- Step 4:** Enable “Auto Login” to login automatically when starting Remote Live Viewer.
- Step 5:** Click on Test Server to check if the server is available.
- Step 6:** Click Add to insert the setting to server list (*Pic.6.4*).

NOTE:

To change the setting, select a server on server list and click “Update” after modify setting.
To remove the server, select a server on server list and then click “Delete”.

6.1.3. Group Setting

Allocate different cameras into each appointed group (*Pic.6.5*).

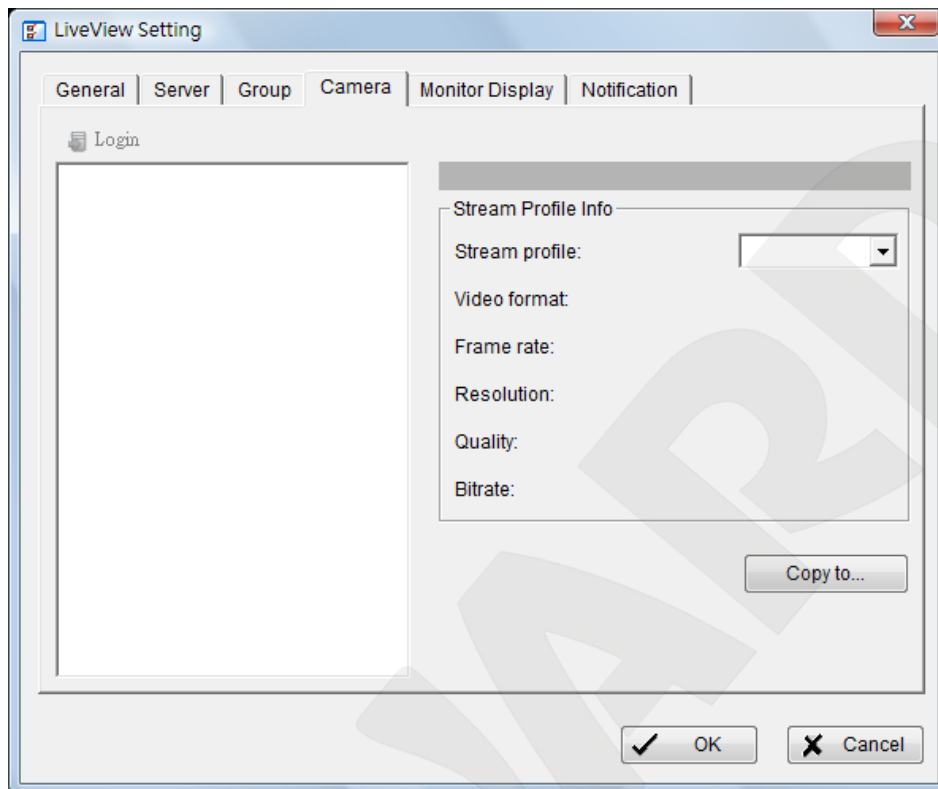


Pic.6.5

- Step 1:** Log in to all the servers that contain the camera(s) you would like to put into the group(s).
- Step 2:** Click Insert to create a new group; name the group for future reference.
- Step 3:** From the window at the right, highlight the camera(s) that you would like to add to a group and then click on the “<--” button. Repeat the process until satisfied with the group setting.
- Step 4:** Click on the Delete and Rename button to remove or rename a specific group.
- Step 5:** Repeat Steps 2 to 4 to adjust the group setting until satisfied.
- Step 6:** Click OK.

6.1.4. Camera Setting

Select the preferred stream type of each camera as default live view profile (*Pic.6.6*).



Pic.6.6

Stream profile: List differs according to different types of video inputs and licenses.

Auto: The system will adjust the stream type automatically to fit different screen divisions.

Recorded: The system will follow the stream profile set in Main Console >Schedule > Encoding Options.

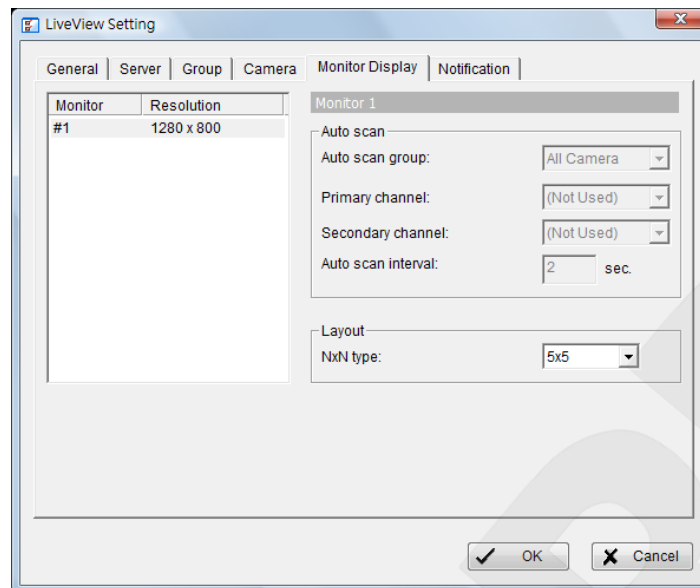
Original (IP only): The system will display the streaming directly from the IP camera and video server.

High / Normal / Low/ Minimum / H.264: The system will follow the stream profile set in Main Console - Setting - Camera - Stream Profile.

Copy to: Select in order to copy the preferred stream profile of a channel to all of the listed channels.

6.1.5. Monitor Display Setting

Activate auto scan to rotate the channels/ cameras on screen (*Pic.6.7*).



Pic.6.7

Step 1: Select the Monitor connected to the system.

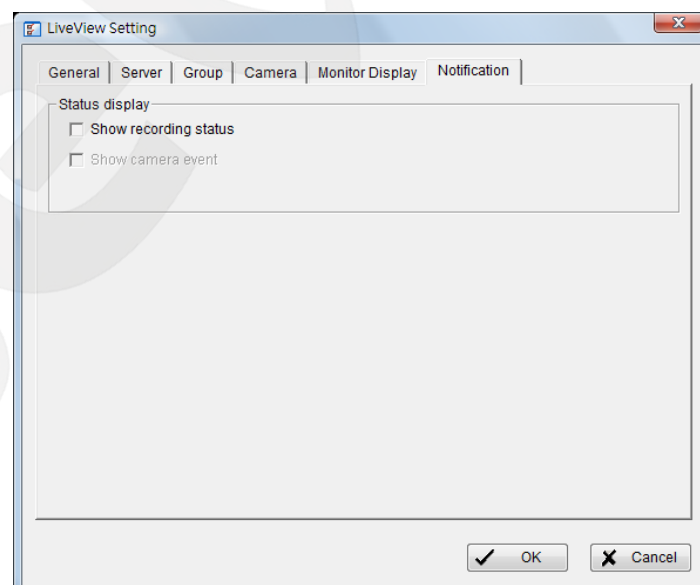
Step 2: Auto scan group: Select appointed server group to activate auto scan settings.

Step 3: Primary channel: Select appointed channel that will always be on the screen when auto scan is activated.

Step 4: Secondary channel: Select appointed channel with secondary priority behind primary channel when auto scan is activated.

Step 5: Layout: Select the screen division of “NxN type” in Remote live viewer panel.

6.1.6. Notification Setting



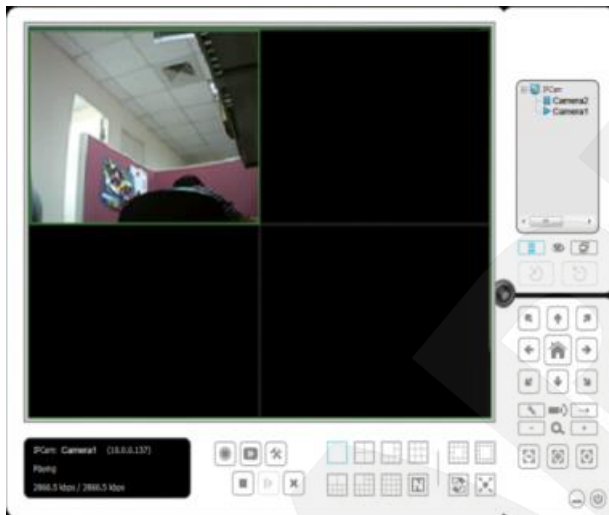
Pic.6.8

Status display: Show recording status: Check to show the crystal ball with recording status on monitor display.

6.2. Show Camera(s) On the Display Screen

Select a camera(s) from the server/ camera list on the right and then drag it to where you want the image to be displayed (*Pic.6.9*).

On the server/ camera list, right click on a camera to connect/ disconnect it.



Pic.6.9

6.2.1. Log In/ Log Out:

Select a server or a group and click on the log in/ out icon to access/ leave the server. You may also log in/ out from the server by right clicking on it.

6.2.2. Server and Camera List:

Display a complete list of the server(s) and camera(s) that are added to the system.

6.2.3. PTZ Camera Control:

You may control the camera view by utilizing the PTZ camera control panel to adjust the camera's view. This is only available with cameras that support PTZ function.

6.2.4. Zoom Tele

Click on the + and – signs to zoom in and out the view.

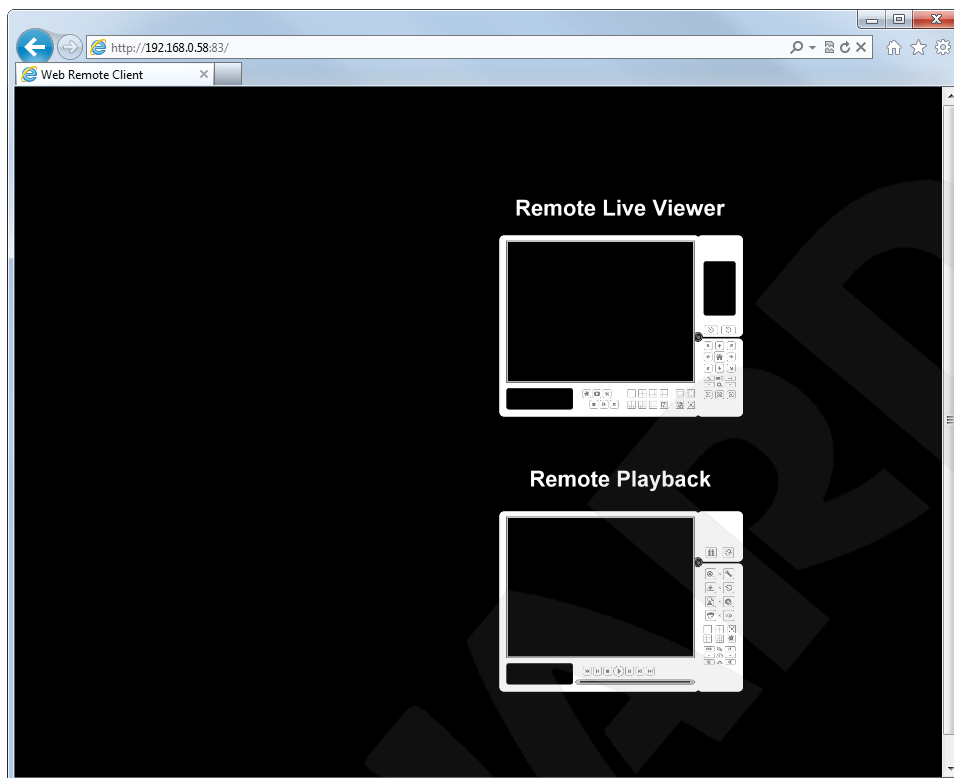
6.2.5. Play/ Stop/Drop

Select a camera/ video and click on this button to play/stop/disconnect a particular channel.

6.2.6. Information Display Window

Display video information including server name, video current status, and bit rate for a selected channel.

Chapter 7. Web View



Pic.7.1

NOTE:

Make sure the Live Streaming Server is enabled. Check 5.10.1 Network Service for more detail. Only support 1 channel at the same time for Remote function.

7.1. Server IP

Open an Internet Explorer browser and enter the IP address or DDNS “name” of the server followed by the connecting port.

Example: <http://localnet:8080/>

NOTE:

Localnet is the IP address of the server.

8080 is the port specified in “Use Default Web Server” in Network Service.

7.2. Remote Live Viewer

Press this icon to use Remote Live Viewer which functions are the same as Live Viewer.

7.3. Remote Playback

Press this icon to use Remote Playback which functions are the same as Playback.

Appendix

A. System loading

Here are some testing results of multi-channel IP camera viewing:

1. 16 Channel IP Camera with VGA/D1 Performance

Equipment Configuration

Software:	MainConsole Version 3.5.8 Professional
CPU:	Intel Core i3-2100
Memory:	2Gb (2x1Gb)
Ethernet:	Gigabit Ethernet Controller
Hard Disk:	ST3250410AS (250 GB)
Graphic card:	Intel HD Graphics 2000
Operating System:	Windows 7 Professional

Results from Test with a Resolution of 640×480 CMOS IP Camera.

640x480	Quality	Frame Rate	CPU Load	Bandwidth
16 IP camera	Detailed	30	80%	30 Mbps
16 IP camera	Excellent	30	85%	40 Mbps

2. 16 Channel IP Camera with 1M (1280x720) Performance

Equipment Configuration

Software:	MainConsole Version 3.5.8 Professional
CPU:	Intel Core i7-3770K
Memory:	4Gb (2x2Gb)
Ethernet:	Gigabit Ethernet Controller
Hard Disk:	WD1002FAEX (1TB)
Graphic card:	AMD HD7750 1Gb DDR5
Operating System:	Windows 7 Professional

Results from Test with a Resolution of 1280×720 CMOS IP Camera

1280x720	Quality	Frame Rate	CPU Load	Bandwidth
16 IP camera	Detailed	30	70%	90 Mbps
16 IP camera	Excellent	30	75%	110 Mbps

B. Storage Requirements Table (VGA)

Please refer to the following table to find out the capability for recording into your hard disk.

B.1. NTSC CCD IP Camera

B.1.1. MPEG4 Storage Requirement GB / channel / day @ 30fps

Quality	704*480	352*240	176*120
Excellent	21.1	8.4	2.1
Detailed	9.0	2.6	0.8
Good	4.7	1.6	0.6
Standard	3.7	1.2	0.5
Medium	2.6	0.9	0.4

B.1.2. MPEG4 Storage Requirement GB / channel / day @ 15fps

Quality	704*480	352*240	176*120
Excellent	10.5	4.2	1.1
Detailed	4.5	1.3	0.4
Good	2.3	0.8	0.3
Standard	1.8	0.6	0.2
Medium	1.3	0.5	0.2

B.1.3. MPEG4 Storage Requirement GB / channel / day

Image-Size	Bitrate Setting	Frame-Rate Setting	Storage Requirement
704*480	2048	30	23.0
704*480	2048	15	22.1
704*480	1536	30	18.5
704*480	1536	15	17.9
704*480	1024	30	11.1
704*480	1024	15	11.6
704*480	512	30	5.5
704*480	512	15	6.9
352*240	1536	30	15.8
352*240	1536	15	16.9
352*240	1024	30	11.6
352*240	1024	15	11.6
352*240	512	30	5.6
352*240	512	15	6.3

176*120	1024	30	10.5
176*120	1024	15	9.5
176*120	512	30	5.6
176*120	512	15	5.8
176*120	128	30	1.6
176*120	128	15	1.6

B.1.4. MJPEG Storage Requirement GB / channel / day @ 15fps

Quality	704*480	352*240	176*120
Excellent	79.1	29.5	10.5
Detailed	52.7	15.8	7.4
Good	36.9	10.5	5.3
Standard	21.1	8.4	4.2
Medium	13.7	5.3	3.2

B.1.5. MJPEG Storage Requirement GB / channel / day

Image-Size	Quality Setting	Frame-Rate Setting	Current Bitrate
704*480	Excellent	15	79.1
704*480	Excellent	5	42.2
704*480	Good	15	36.9
704*480	Good	5	15.8
704*480	Medium	15	13.7
704*480	Medium	5	5.8
352*240	Excellent	15	29.5
352*240	Excellent	5	12.7
352*240	Good	15	10.5
352*240	Good	5	4.7
352*240	Medium	15	5.3
176*120	Medium	5	2.3
176*120	Excellent	15	10.5
176*120	Excellent	5	4.2
176*120	Good	15	5.3
176*120	Good	5	2.1
176*120	Medium	15	3.2
176*120	Medium	5	1.1

B.2. PAL CCD IP Camera

B.2.1. MPEG4 Storage Requirement GB / channel / day @ 30fps

Quality	704*480	352*240	176*120
Excellent	19.4	4.3	1.1
Detailed	6.5	1.6	0.5
Good	4.3	1.1	0.4
Standard	3.2	0.9	0.3
Medium	2.2	0.6	0.2

B.2.2. MPEG4 Storage Requirement GB / channel / day @ 15fps

Quality	704*480	352*240	176*120
Excellent	9.7	2.2	0.5
Detailed	3.2	0.8	0.3
Good	2.2	0.5	0.2
Standard	1.6	0.4	0.2
Medium	1.1	0.3	0.1

B.2.3. MPEG4 Storage Requirement GB / channel / day

Image-Size	Bitrate Setting	Frame-Rate Setting	Storage Requirement
704*480	2048	30	21.6
704*480	2048	15	22.7
704*480	1536	30	17.3
704*480	1536	15	18.4
704*480	1024	30	11.9
704*480	1024	15	13.0
704*480	512	30	5.9
704*480	512	15	7.0
352*240	1536	30	16.2
352*240	1536	15	17.3
352*240	1024	30	11.9
352*240	1024	15	11.9
352*240	512	30	5.9
352*240	512	15	6.5
176*120	1024	30	10.8
176*120	1024	15	10.8
176*120	512	30	5.9

176*120	512	15	6.5
176*120	128	30	1.6
176*120	128	15	1.6

B.2.4. MJPEG Storage Requirement GB / channel / day @ 15fps

Quality	704*480	352*240	176*120
Excellent	84.2	18.4	7.0
Detailed	46.4	10.8	4.9
Good	27.0	7.0	3.8
Standard	14.0	4.9	2.7
Medium	10.8	3.2	1.9

B.2.5. MJPEG Storage Requirement GB / channel / day

Image-Size	Quality Setting	Frame-Rate Setting	Current Bitrate
704*480	Excellent	15	84.2
704*480	Excellent	5	43.2
704*480	Good	15	27.0
704*480	Good	5	13.0
704*480	Medium	15	10.8
704*480	Medium	5	5.4
352*240	Excellent	15	18.4
352*240	Excellent	5	9.7
352*240	Good	15	7.0
352*240	Good	5	3.6
352*240	Medium	15	3.2
176*120	Medium	5	1.7
176*120	Excellent	15	7.0
176*120	Excellent	5	3.2
176*120	Good	15	3.8
176*120	Good	5	1.6
176*120	Medium	15	1.9
176*120	Medium	5	0.8

B.3. CMOS IP Camera

B.3.1. MPEG4 Storage Requirement GB / channel / day @ 30fps

Quality	640*480	320*240	160*120
Excellent	10.5	3.2	0.9
Detailed	4.2	1.6	0.5
Good	3.2	1.1	0.3
Standard	2.6	0.7	0.3
Medium	2.6	0.6	0.2

B.3.2. MPEG4 Storage Requirement GB / channel / day @ 15fps

Quality	640*480	320*240	160*120
Excellent	5.3	1.6	0.4
Detailed	2.1	0.8	0.3
Good	1.6	0.6	0.2
Standard	1.3	0.4	0.1
Medium	1.3	0.3	0.1

B.3.3. MPEG4 Storage Requirement GB / channel / day

Image-Size	Bitrate Setting	Frame-Rate Setting	Current Bitrate
640*480	2048	30	23.0
640*480	2048	15	22.2
640*480	1536	30	18.5
640*480	1536	15	17.9
640*480	1024	30	10.5
640*480	1024	15	10.5
640*480	512	30	5.3
640*480	512	15	6.3
320*240	1536	30	15.8
320*240	1536	15	16.9
320*240	1024	30	10.5
320*240	1024	15	10.5
320*240	512	30	5.8
320*240	512	15	6.3
160*120	1024	30	10.0
160*120	1024	15	7.9
160*120	512	30	5.3

160*120	512	15	0.5
160*120	128	30	1.4
160*120	128	15	1.5

B.3.4. MJPEG Storage Requirement GB / channel / day @ 15fps

Quality	640*480	320*240	160*120
Excellent	42.2	15.8	6.3
Detailed	25.3	9.5	4.2
Good	16.9	6.9	3.2
Standard	13.7	5.3	2.5
Medium	9.5	3.7	1.8

B.3.5. MJPEG Storage Requirement GB / channel / day

Image-Size	Quality Setting	Frame-Rate Setting	Current Bitrate
640*480	Excellent	15	42.2
640*480	Excellent	5	16.9
640*480	Good	15	16.9
640*480	Good	5	6.9
640*480	Medium	15	9.5
640*480	Medium	5	3.8
320*240	Excellent	15	15.8
320*240	Excellent	5	5.8
320*240	Good	15	6.9
320*240	Good	5	2.7
320*240	Medium	15	3.7
160*120	Medium	5	1.4
160*120	Excellent	15	6.3
160*120	Excellent	5	2.4
160*120	Good	15	3.2
160*120	Good	5	1.2
160*120	Medium	15	1.8
160*120	Medium	5	0.7

C. Storage Requirement Table (Mega)

Please refer to the following table to find out the capability for recording into your hard disk.

C.1.1. H.264 Storage Requirement GB / channel / day @ 30fps

Quality	1280*1024	1280*720	640*480	320*240
Excellent	464,8	315,4	49,8	15
Detailed	282,8	215,8	33,2	12,6
Good	215,8	149,4	28,4	10
Standard	132,8	99,6	25	9,2
Medium	99,6	74,8	21,6	7,6

C.1.2. H.264 Storage Requirement GB / channel / day @ 15fps

Quality	1280*1024	1280*720	640*480	320*240
Excellent	232.4	157.7	24.9	7.5
Detailed	141.4	107.9	16.6	6.3
Good	107.9	74.7	14.2	5
Standard	66.4	49.8	12.5	4.6
Medium	49.8	37.4	10.8	3.8

C.1.3. H.264 Storage Requirement GB / channel / day @ 10fps

Quality	1280*1024	1280*720	640*480	320*240
Excellent	157.7	116.2	20.8	5.9
Detailed	99.6	74.7	15	5
Good	74.7	54	13.3	4.7
Standard	54	37.4	10.8	4.2
Medium	37.4	29.1	10	3.4

C.1.4. MPEG4 Storage Requirement GB / channel / day

Image-Size	Bitrate Setting	Frame-Rate Setting	Storage Requirement
1280*1024	6144	15	522.9
1280*1024	6144	10	522.9
1280*1024	2048	15	182.6
1280*1024	2048	10	182.6
1280*1024	512	15	45.7
1280*1024	512	10	45.7
1280*720	6144	15	522.9

1280*720	6144	10	522.9
1280*720	2048	15	182.6
1280*720	2048	10	182.6
1280*720	512	15	45.7
1280*720	512	10	45.7
640*480	6144	15	522.9
640*480	6144	10	522.9
640*480	2048	15	182.6
640*480	2048	10	182.6
640*480	512	15	45.7
640*480	512	10	45.7
320*240	6144	15	423.3
320*240	6144	10	298.8
320*240	2048	15	182.6
320*240	2048	10	182.6
320*240	512	15	45.7
320*240	512	10	45.7

C.1.5. MPEG4 Storage Requirement GB / channel / day @ 15fps

Quality	1280*1024	1280*720	640*480	320*240
Excellent	315.4	249	49.8	10.8
Detailed	240.7	182.6	37.4	9.2
Good	149.4	116.2	24.9	7.5
Standard	99.6	74.7	20.8	5.9
Medium	74.7	49.8	16.6	5

C.1.6. MPEG4 Storage Requirement GB / channel / day @ 10fps

Quality	1280*1024	1280*720	640*480	320*240
Excellent	249	190.9	41.5	9.2
Detailed	182.6	132.8	33.2	8.3
Good	116.2	91.3	20.8	6.7
Standard	78.9	58.1	16.6	5.4
Medium	58.1	45.7	14.5	4.2

C.1.7. MPEG4 Storage Requirement GB / channel / day

Image-Size	Quality Setting	Frame-Rate Setting	Storage Requirement
1280*1024	6144	15	431.6
1280*1024	6144	10	522.9
1280*1024	2048	15	182.6
1280*1024	2048	10	182.6
1280*1024	512	15	45.7
1280*1024	512	10	45.7
1280*720	6144	15	522.9
1280*720	6144	10	522.9
1280*720	2048	15	182.6
1280*720	2048	10	182.6
1280*720	512	15	45.7
1280*720	512	10	45.7
640*480	6144	15	522.9
640*480	6144	10	522.9
640*480	2048	15	182.6
640*480	2048	10	182.6
640*480	512	15	45.7
640*480	512	10	45.7
320*240	6144	15	182.6
320*240	6144	10	149.4
320*240	2048	15	182.6
320*240	2048	10	149.4
320*240	512	15	45.7
320*240	512	10	45.7

2.VGA Mode

C.2.1. H.264 Storage Requirement GB / channel / day @ 30fps

Quality	640*480	320*240
Excellent	66.4	10
Detailed	37.4	8.3
Good	24.9	5.9
Standard	16.6	5
Medium	15	4.2

C.2.2. H.264 Storage Requirement GB / channel / day @ 15fps

Quality	640*480	320*240
Excellent	41.5	8.3
Detailed	24.9	6.7
Good	20.8	5
Standard	15	4.6
Medium	12.5	4.2

C.2.3. H.264 Storage Requirement GB / channel / day

Image-Size	Bitrate Setting	Frame-Rate Setting	Current Bitrate	Storage Requirement
640*480	6144	30	6300	522.9
640*480	6144	15	6300	522.9
640*480	2048	30	2200	182.6
640*480	2048	15	2200	182.6
640*480	512	30	550	45.7
640*480	512	15	550	45.7
320*240	6144	30	6300	522.9
320*240	6144	15	5500	456.5
320*240	2048	30	2200	182.6
320*240	2048	15	2200	182.6
320*240	512	30	550	45.7
320*240	512	15	550	45.7

C.2.4. MPEG4 Storage Requirement GB / channel / day @ 30fps

Quality	640*480	320*240
Excellent	116.2	20.8
Detailed	83	13.3
Good	49.8	10
Standard	33.2	7.5
Medium	24.9	6.7

C.2.5. MPEG4 Storage Requirement GB / channel / day @ 15fps

Quality	640*480	320*240
Excellent	74.7	15
Detailed	54	11.7

Good	37.4	8.3
Standard	25	6.7
Medium	16.6	5.9

C.2.6. MJPEG Storage Requirement GB / channel / day

Image-Size	Bitrate Setting	Frame-Rate Setting	Current Bitrate	Storage Requirement
640*480	6144	30	6300	522.9
640*480	6144	15	6300	522.9
640*480	2048	30	2200	182.6
640*480	2048	15	2200	182.6
640*480	512	30	550	45.7
640*480	512	15	550	45.7
320*240	6144	30	5100	423.3
320*240	6144	15	2800	232.4
320*240	2048	30	2200	182.6
320*240	2048	15	2200	182.6
320*240	512	30	550	45.7
320*240	512	15	550	45.7